

interact

Software features & functions

Architecture FLX - Multisite

Learning objectives | Software features & functions

At the end of this lesson, you will:

- Be familiarized with the dashboard.
- List all possibilities of Multisite.



interact



Multisite dashboard



- Our intuitive dashboard makes it easy to create versatile and attractive retail spaces, and allows you to manage, monitor and adjust the lighting remotely over all sites.
- At your glanceable dashboard, you will gain insight in energy consumption patterns of your store lighting, and energy savings of a site for a selected period.
- Use your dashboard to analyze the energy consumption of your stores, to define optimized lighting schedules and dimming settings and deploy these to all your stores in one go.

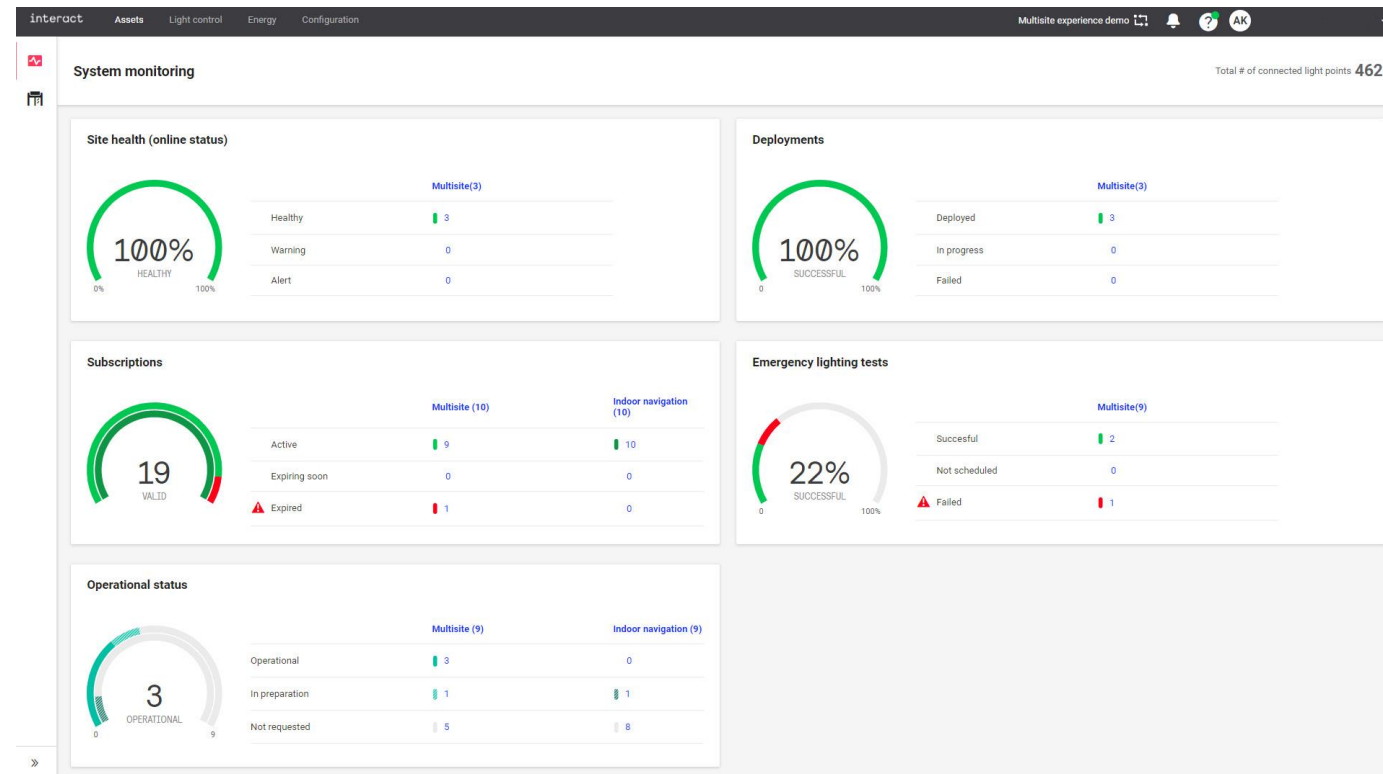
Asset overview

- Single dashboard showing system health
- See all your sites in one overview
- Toggle between list view and detailed site view
- Includes the status of licenses and Subscriptions
- Know which sites are fully operational or upcoming
- Monitor live which scenes are running on every site
- Successful updates of light configurations

Multilanguage support

Secure user authentication, profile-based management and multi-language support:

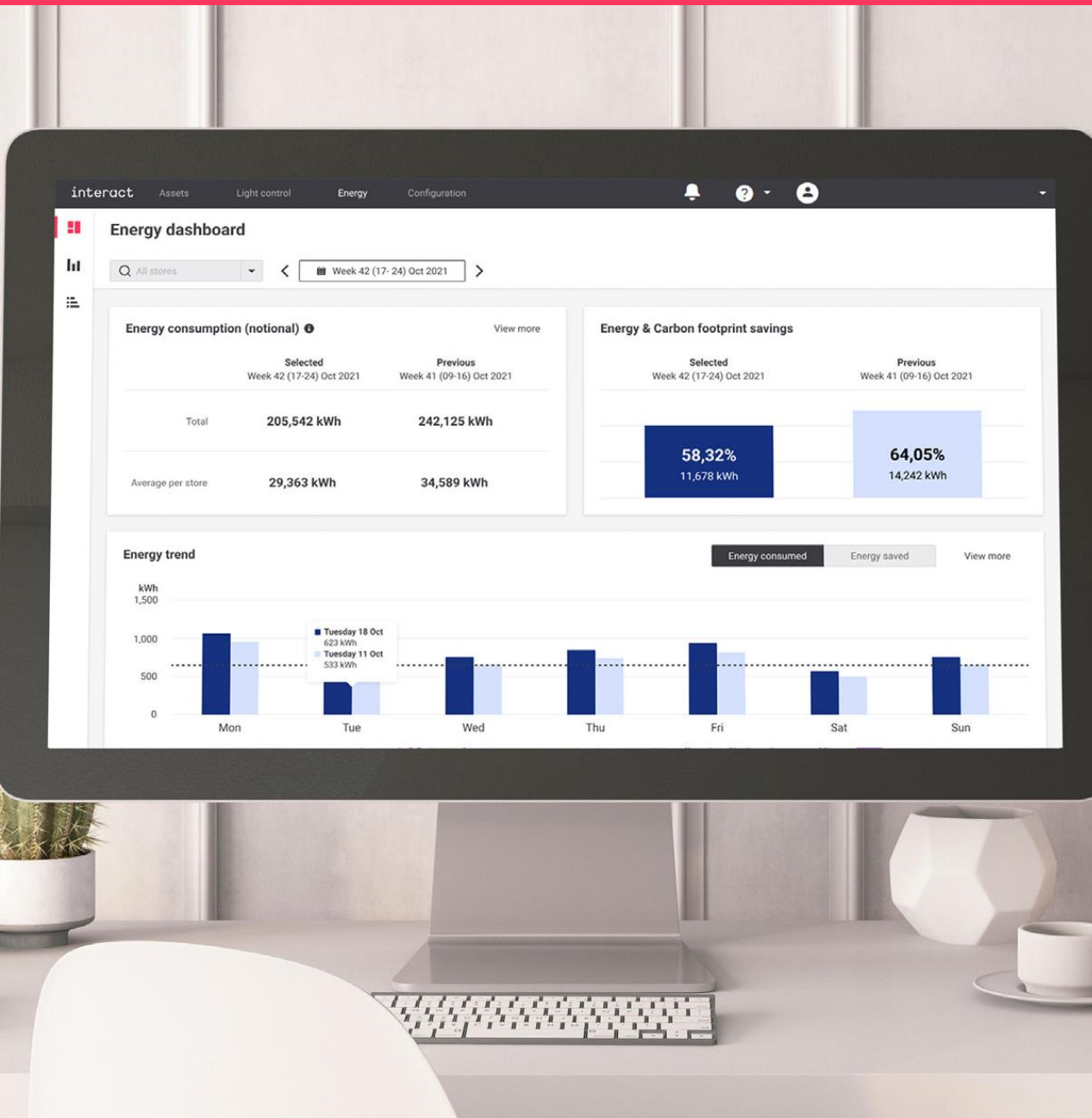
- Danish
- Dutch
- English
- French
- German
- Italian
- Japanese
- Polish
- Portuguese
- Russian
- Spanish





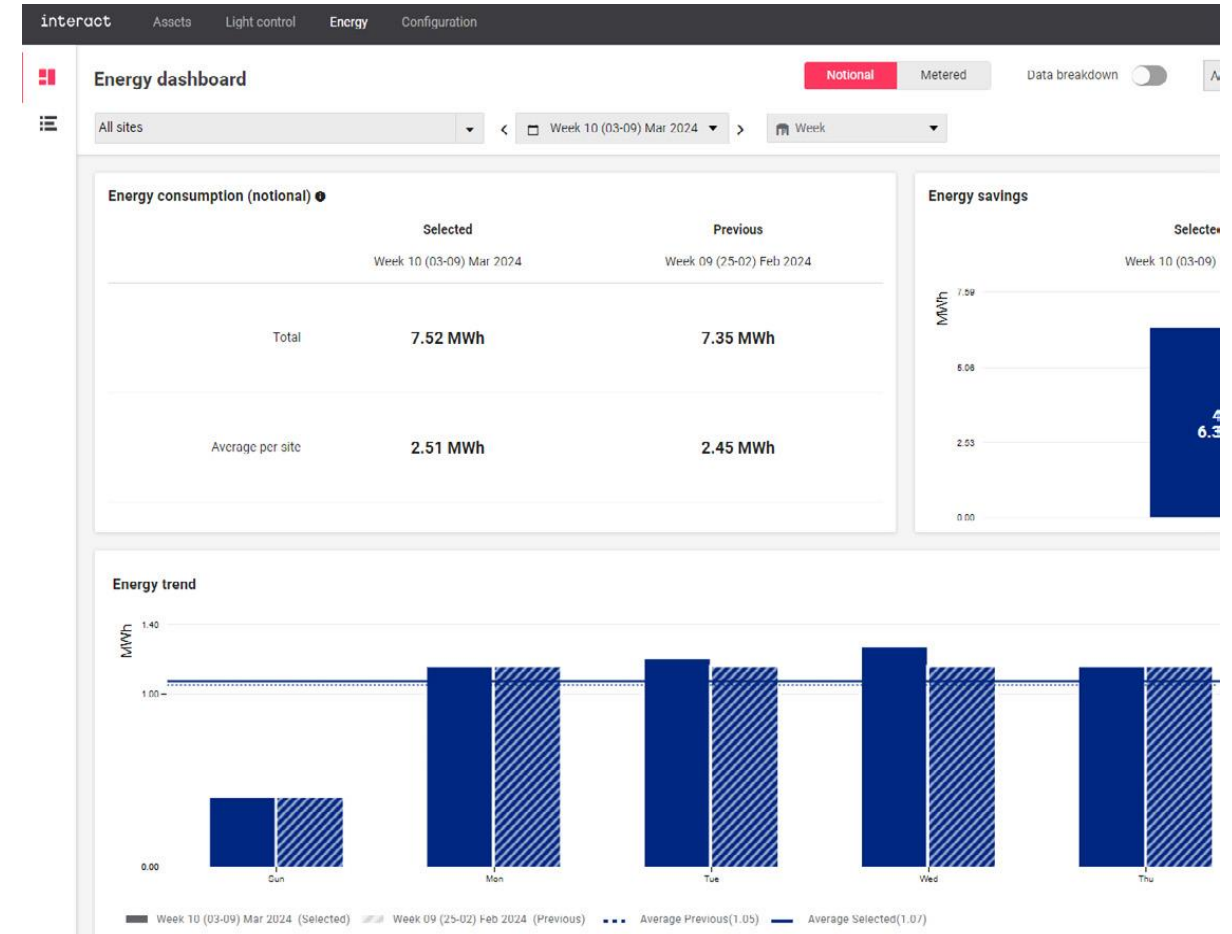
Energy Monitoring

- Gain insight in energy consumption patterns of your connected sites and implement best practices. At your glanceable dashboard, you will get a quick overview of the energy consumption and energy savings of one or all sites for a selected period.
 - Evaluate the savings with the intuitive weekly and monthly comparisons.
 - You can easily sort and rank all the sites in your portfolio using the site list.
 - Identify outliers and thereby bringing the quick wins to your fingertips.
- The energy dashboard visualizes both notional as well as metered energy data. Understanding energy consumption patterns helps you to optimize savings to maximize the benefits of your lighting refurbishment.



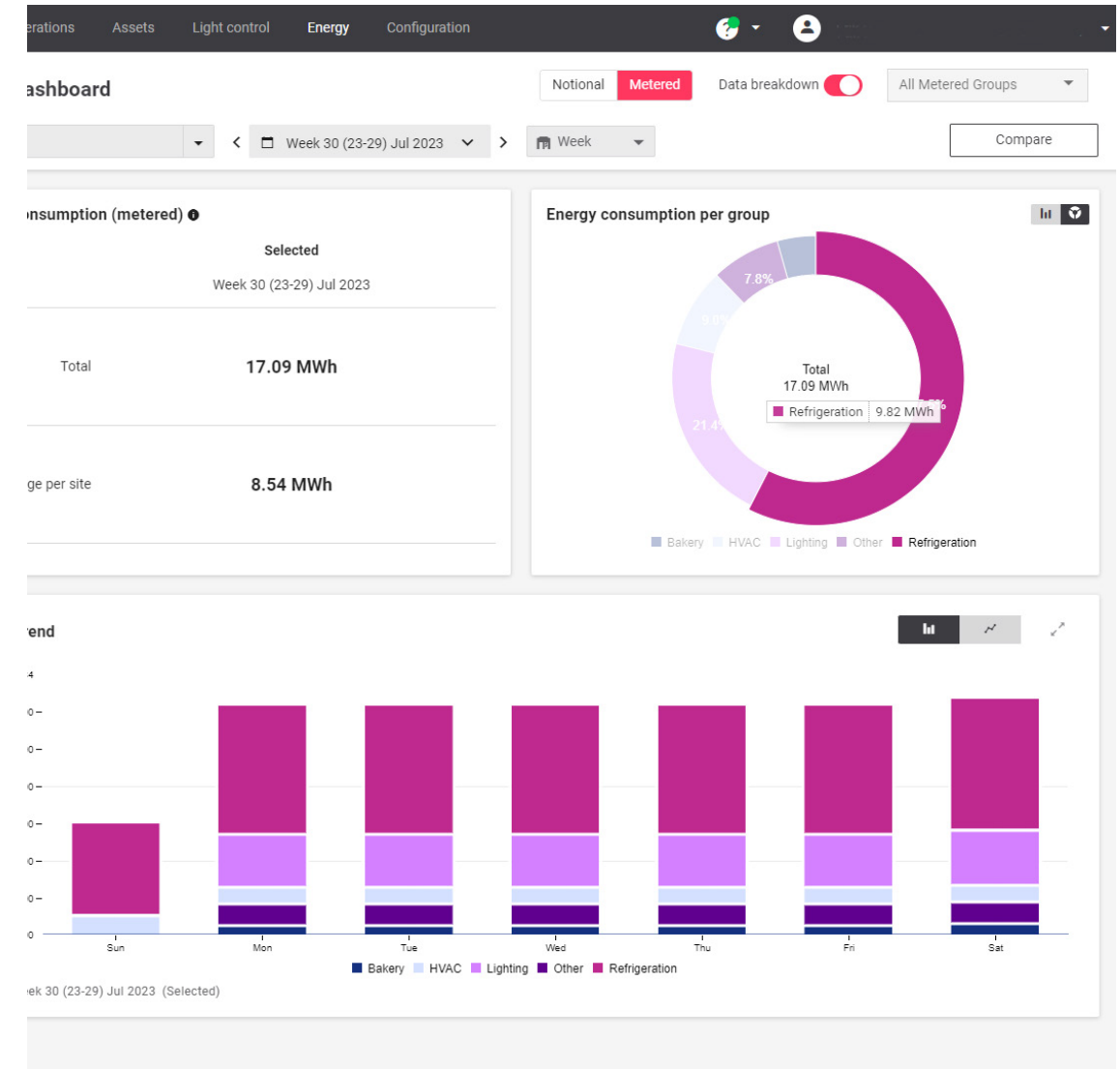
Energy dashboard for notional energy

- The energy dashboard provides insights in the energy consumption and savings of the lighting of all your sites. It shows you the most relevant parameters, including:
 - Energy consumption and savings
 - Split: Dim savings and On/Off savings
 - Historical energy trend compared with the previous period
- On the dashboard, it's easy to select a more detailed notional energy trend, as well as a site list showing a ranking of all the sites in your portfolio.



Energy dashboard for metered energy

- By adding smart meters, the energy dashboard allows you to monitor multiple power zones, also beyond lighting. Understand patterns in energy consumption for different groups, like lighting, refrigeration, bakery and HVAC.
- The dashboard provides insights in the energy consumption of all metered groups:
 - Total energy consumption
 - Data breakdown to show energy consumption per group
 - Select a single group to gain more insights of the energy consumption of this group

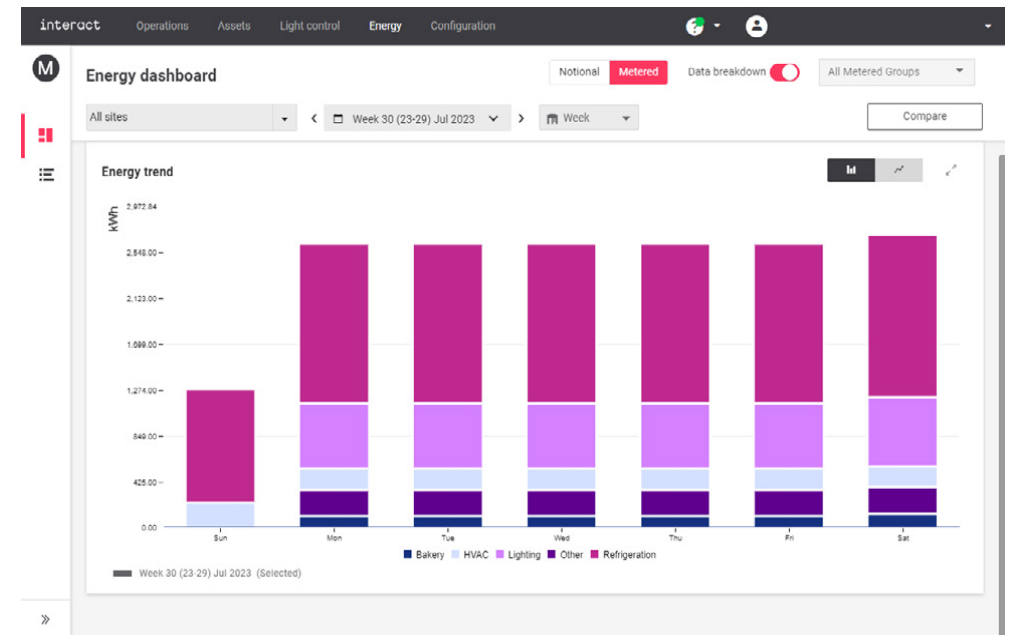
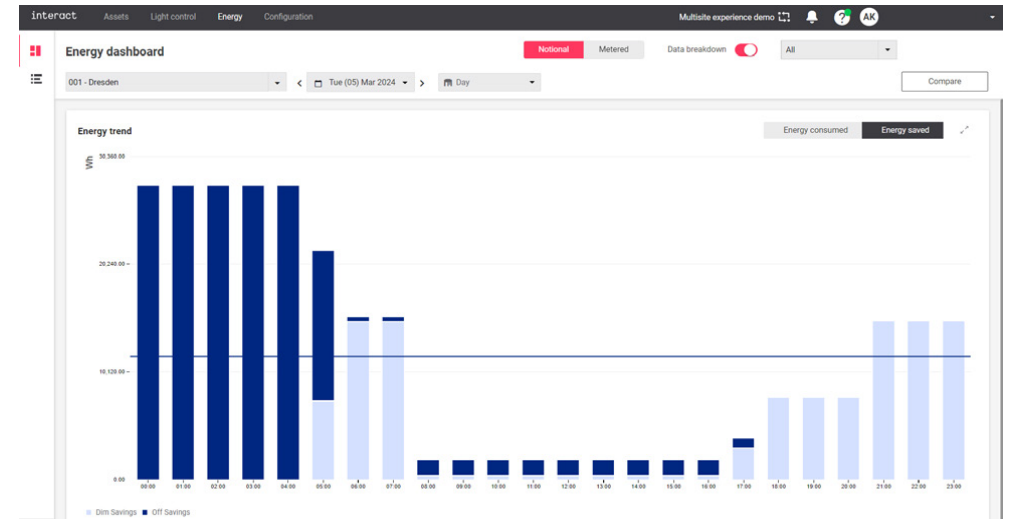


interact

Graphical representation of the energy trend

Energy trend view

- Shows a detailed diagram of historical data of either energy consumption or energy savings.
- Analyze trends of one of your sites or select all sites
- Compare energy trend with a previous period to easily detect anomalies
- Investigate energy breakdown to gain further insights
- Study dim savings to derive insights.
- Drive down energy consumption to save cost and meet sustainability goals



- Shows the ranking of a selected site in comparison with all other sites
- Easy sorting on various energy parameters (absolute or normalized)
- Find outliers, best and worst performing sites, easily and act on it.
- Analyze a specific period of interest

[illegible]



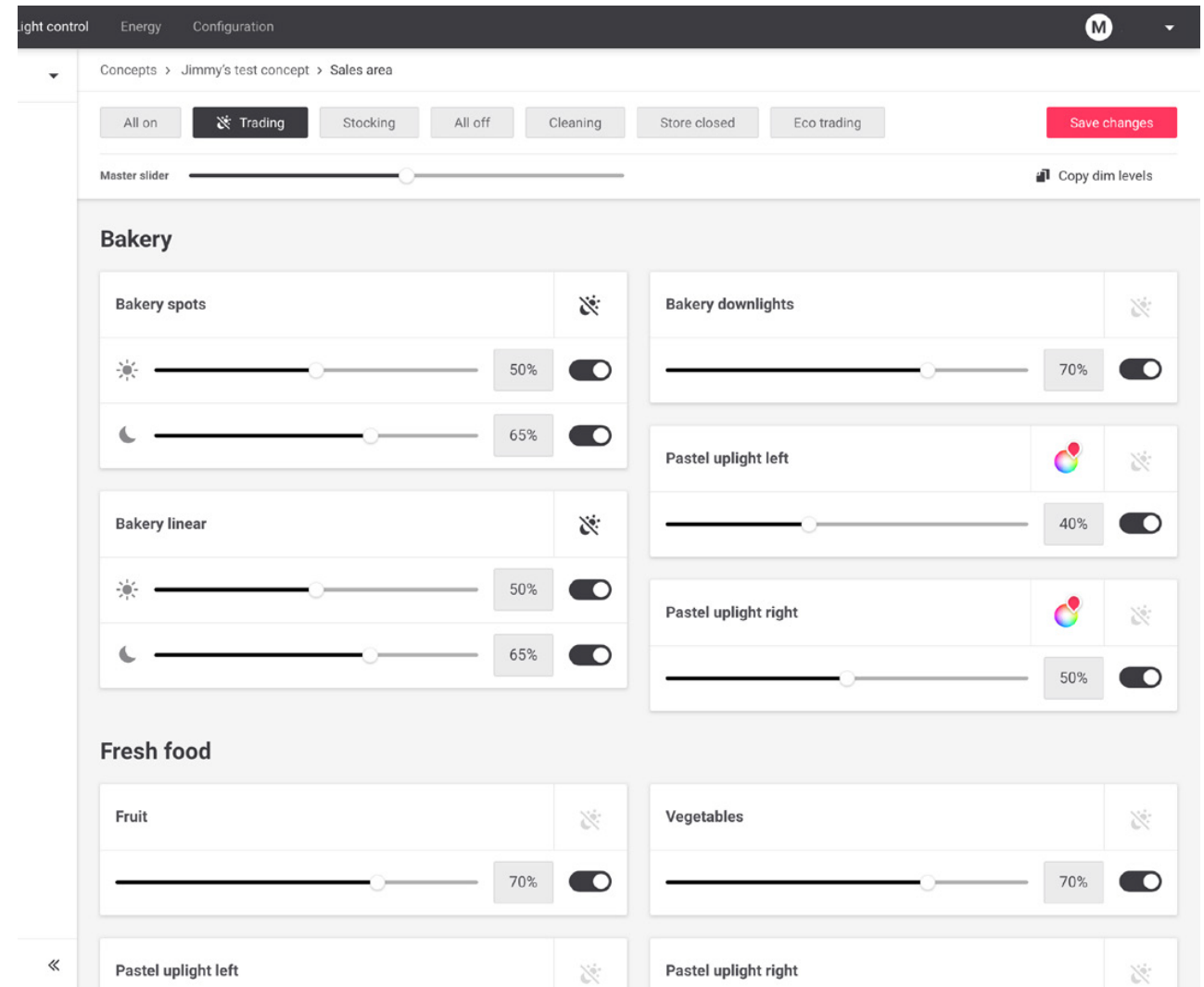
Light management: Scene & schedule adjustment

- Through a single intuitive dashboard, Multisite makes it easy to create stunning and flexible retail spaces. You can monitor and control the lighting remotely over all sites by adjusting centralized scheduling and scene settings for extra energy Savings.
- Simply adjust the lighting to your needs within the same day and deploy to any number of sites, for example when the opening hours change.
- Save site visits through remote lighting adjustments. Create seasonal schedules and save additional energy by dimming during winter when it gets dark earlier.
- Help reducing operational expenses based on meaningful insights of your energy consumption and meet your sustainability targets too.

Scene adjustment

- Remotely adjust light levels to your needs
- Live validation to preview the changes on an actual site
- Zoning
- Day/night mode to support the astronomical clock feature
- Adjust fade time*

* Adjust fade time is part of schedule



Schedule adjustment

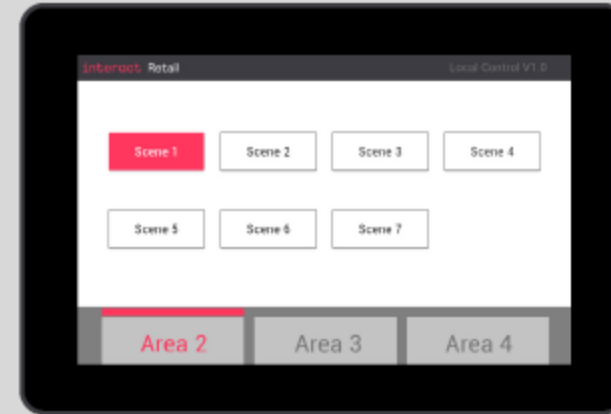
- Intuitive wizard that helps with schedule creation and calendar adjustments
- Guided steps to deploy your adjustments to all sites or the correct subset of your sites (batch updates)
- Zoom in to view individual stores: see what is running & upcoming scenes

The screenshot displays the 'interact' Multisite System Manager interface. The top navigation bar includes 'Overview', 'Schedules', and 'Venues'. The main content area is titled 'HQ Schedule Demonstration' and shows a calendar view for 'Jan 1, 2019 - No end date'. The interface is divided into three tabs: 'Time Blocks', 'Calendar', and 'Apply'. The 'Time Blocks' tab is active, showing a list of events. The first event is 'Weekends Simple Event', which is 'Off: Store' from 00:00:00 to 00:00:00. The second event is 'Weekdays Simple Event', which is 'Off: Store' from 00:00:00 to 06:00:00, 'Low: Store' from 06:00:00 to 08:00:00, 'Medium: Store' from 08:00:00 to 18:00:00, 'High: Store' from 18:00:00 to 21:00:00, and 'Off: S' from 21:00:00 to 22:00:00. The third event is 'BBQ Month Special Event', which is 'Off: Store' from 00:00:00 to 06:00:00, 'Low: Store' from 06:00:00 to 08:00:00, 'High: Store' from 08:00:00 to 20:00:00, 'Low: Store' from 20:00:00 to 22:00:00, and 'Off: S' from 22:00:00 to 23:00:00. The interface also includes a sidebar with icons for users, settings, and other features.

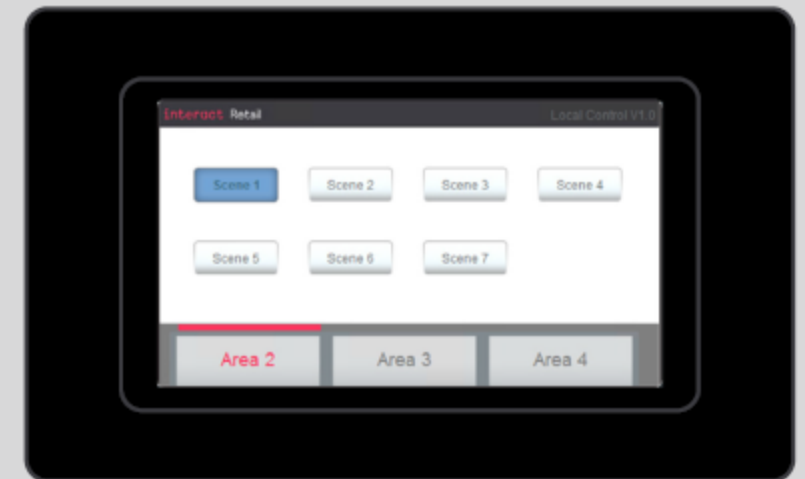
Let your staff take control

Local manual override

- Touch panel for local manual override provides the store owner flexibility by adjusting lights quickly on the spot:
 - Allows to select one of the presets per area
 - Lighting switches automatically back to the schedule after two hours
 - Easily upgrade your existing Store Kit or Store Flex (StoreWise) to Multisite
 - Reusing existing lighting controls infrastructure and adding a new site gateway



PDTS touch panel



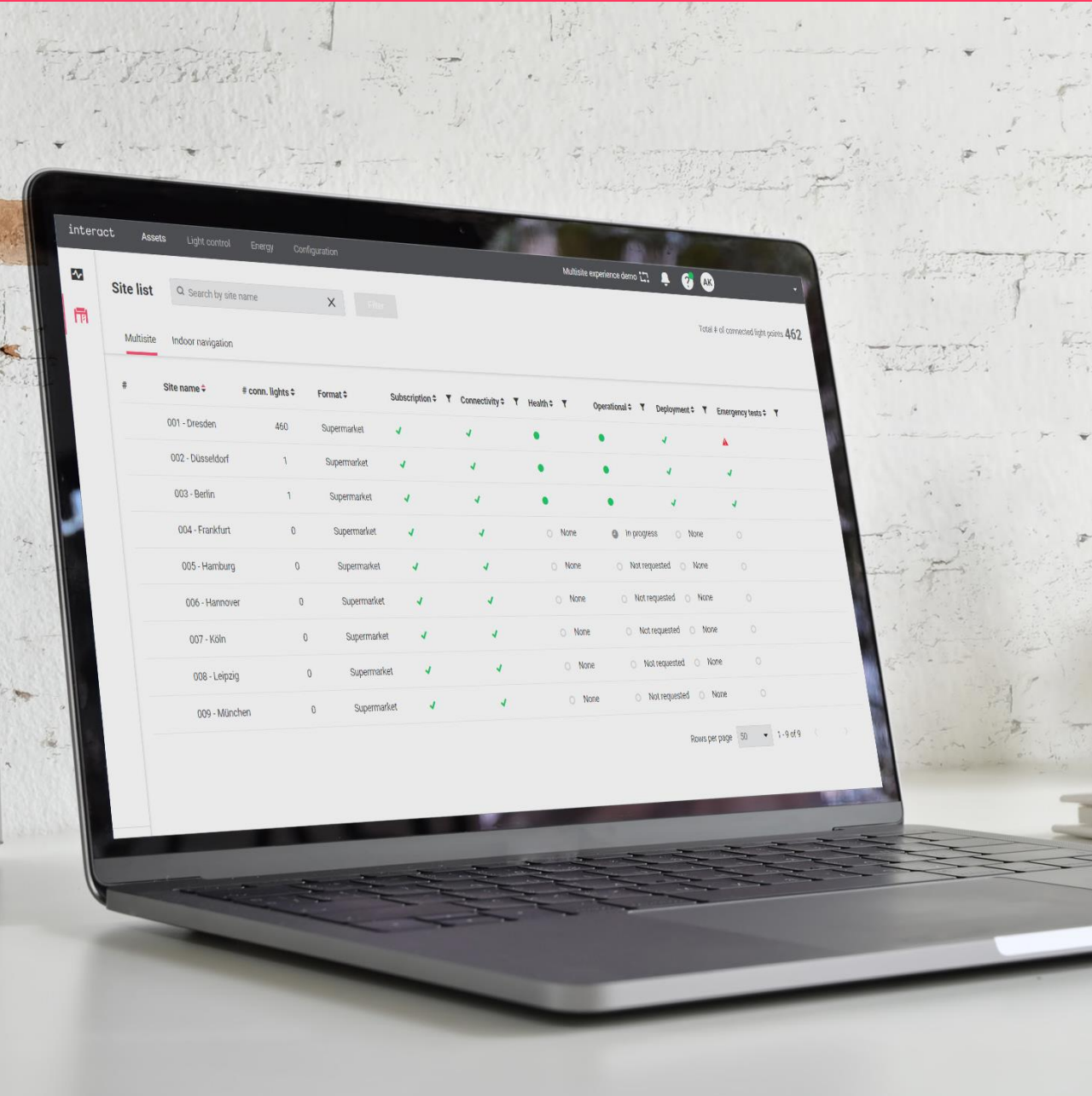
Upgrading installed DTP100 touch panel



Performance report

An insightful quarterly report summarizes the performance and system health data of all your connected sites as generated by Multisite System Manager.

This report contains rich historical data allowing you to follow trends over the last three months. It also shows the best and least performing sites indicating whenever anything requires your attention and to take corrective action.



Overview of all your sites and active services

Subscriptions expiring soon

Notional energy consumption

Energy savings achieved by dimming your light

Carbon footprint reduction achieved by adjusting the lighting properly

1. Serviced sites and subscriptions

Sites	January	February	March
Total sites in preparation	1	6	2
Total operational sites	32	32	37
Total sites	33	38	39

Subscriptions

Subscriptions added	6
Total subscriptions	35

Upcoming expiration date for a site: 30/06/2024

For a table with all serviced sites and subscriptions: see Appendix

2. Remote system adjustments*

	Reporting period	Last 12 months
Deployments	35	56
Adjustments to sites	10	00
Saved costs of site visits	€ 3600	€ 13800

Assumption: € 280 per site visit

	Apr '23	May '23	Jun '23	Jul '23	Aug '23	Sep '23	Oct '23	Nov '23	Dec '23	Jan '24	Feb '24	Mar '24	Total
Deployments	32	7	5	8	1	3	5	3	4	3	3	10	56

Adjustments to sites	32	10	6	8	2	3	10	3	5	3	5	10	69
----------------------	----	----	---	---	---	---	----	---	---	---	---	----	----

* Excludes initial configuration and customer deployments

Number of saved site visits by remote (batch) updates of scenes and schedules

3. Notional energy consumption and energy savings

Sites for energy reporting	January	February	March
Energy consumption*	32	32	37

Total of all sites	48.72 MWh	49.40 MWh	49.39 MWh
Average per site	1.52 MWh	1.42 MWh	1.33 MWh

Dim savings

Total of all sites	10.76 MWh	18.21 MWh	20.00 MWh
Average per site	0.62 MWh	0.57 MWh	0.54 MWh
Percentage	28.9 %	36.8 %	29.0 %

Switch off savings

Total of all sites	56.05 MWh	92.27 MWh	185.52 MWh
Average per site	2.06 MWh	2.88 MWh	2.86 MWh

* Notional energy consumption based on installed power and light level

Energy savings by scheduling and dimming versus installed power

4. Carbon footprint and CO₂ reduction

Energy saving	Total energy savings	Dimmed energy savings*
Smart lighting will save	334.35 MWh	16.09 MWh
Emissions reduction		
Carbon footprint reduction	358.17 tons CO ₂	26.36 tons CO ₂
Equivalent environmental benefit		
Avoided annual emissions of	8384 trees planted	817 trees planted

*Energy savings accumulated for the reporting period

Conversion parameters used

CO₂ emission factor (gCO₂/MWh), value 472, source IEA 2015

CO₂ equivalent trees (tCO₂/tree/year), value 6

6. Compliance

6.1 Sales floor

Compliance check between central deployments and local manual overrides

Compliance	January	February	March
Sites fully compliant	17 sites	19 sites	30 sites
Sites with non-compliant operation	15 sites	13 sites	27 sites
Total hours of compliant operation	56223 hours	53811 hours	68635 hours
Total hours of non-compliant operation	1065 hours	788 hours	3021 hours
Percentage of non-compliant operation	1.9 %	1.5 %	1.7 %

Usage of local manual override versus centrally deployed scenes

7. Cloud availability

	January	February	March
Planned downtime	000:53 h	000:21 h	000:22 h
Unplanned downtime	000:08 h	000:01 h	000:00 h
Percentage of cloud availability	100.8 %	100.0 %	100.8 %

Historical cloud availability

interact



Powerful remote lighting control includes remote monitoring services. You are entitled to helpdesk & service ticketing.

Regular software security and feature updates via cloud ensures that your system is always up to date.

Optional services

1. **4G connectivity service:** Taking away the hassle of integrating with your IT by including a 4G router into the installation.
2. **Remote operations:** Peace of mind - we manage and monitor your lights remotely upon your needs.



Lighting management

4G mobile connectivity service (optional)

In case fixed line connectivity is not possible, we can offer powerful wireless connectivity from the day of commissioning

- ✓ Hassel free installation and commissioning
- ✓ Includes a secure 4G IoT router delivered in partnership with Vodafone
- ✓ Managed data bundle
- ✓ Broad coverage: 3 different preconfigured 4G routers depending on country of project

913701058503

LCN5320/00 INDOOR 4G ROUTER eSIM EU/META

- | | | |
|------------------|---------------|------------------|
| • Austria | • Germany | • Norway |
| • Belgium | • Greece | • Poland |
| • Bulgaria | • Hungary | • Portugal |
| • Croatia | • Ireland | • Romania |
| • Cyprus | • Italy | • Slovakia |
| • Czech Republic | • Latvia | • Slovenia |
| • Denmark | • Lithuania | • Spain |
| • Estonia | • Luxembourg | • Sweden |
| • Finland | • Malta | • Switzerland |
| • France | • Netherlands | • United Kingdom |

SW913705110004

Multisite connectivity EU/US - license

913701058603

LCN5323/00 12V DC PSU INDOOR 4G ROUTER



913701058613

LCN5321/00 INDOOR 4G ROUTER eSIM US/CAN

- United States and Canada
- Bolivia
- Mexico
- Peru

913701058703

LCN5322/00 INDOOR 4G ROUTER eSIM AUS/NZL

- Australia and New Zealand
- Chile
- Colombia
- Ecuador
- Japan

Optional Services (defined and executed in market)

Remote emergency lighting testing service

Store safety is key, and regular health checks of emergency lighting is mandatory. Save precious time by triggering emergency light tests remotely via our experts.

- Trigger functional and duration tests remotely
- Query emergency test results remotely
- Get report with historical test results to plan replacement efficiently if needed
- Get confirmation that your emergency lighting operates correctly on battery

Remote post install site tuning service

Remote expert support to facilitate post install fine tuning and adjustment of your configuration.

- Supports fast and more reliable project execution
- Robust commissioning process to safeguard delivery on time
- No need for additional onsite visits after project handover



Integration with other systems in the building

Hassle free operations with local integration

- With alarm, refrigeration, and BMS systems
- Leverage BMS routines to trigger scenes

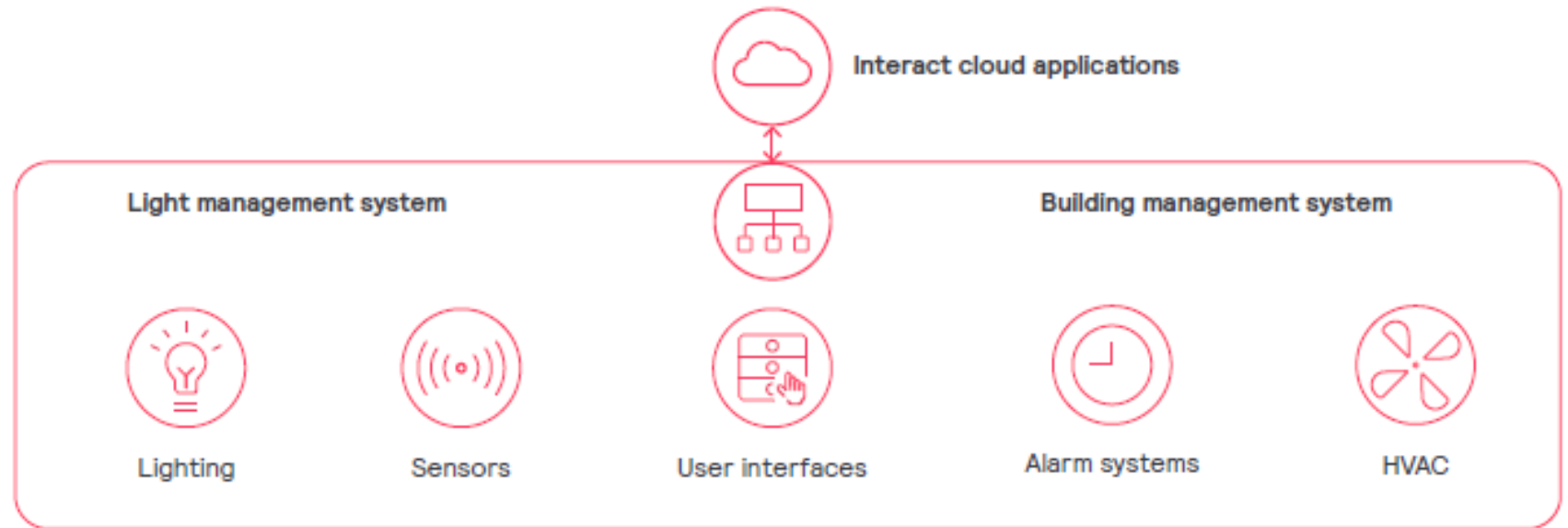
Large variety of local manual override options

- Using touch screens, touch panels or
- Daylight- and presence sensors

Support of common interfaces

- Dry contact
- BACnet
- CGI

Multisite System Manager seamlessly integrates with various types of building management systems including alarm systems using different interfaces.





Best-in-class security is provided for all your connected systems, services and data. Interact supports security on every interface, while data, both in transit and at rest, are end-to-end encrypted.

The Multisite system is based on a modular on-premises Philips Dynalite controls architecture with a secure connection to the Interact cloud platform, managed by Signify, built on top of it.

The site gateway provides a secure cloud connection and manages all lighting at your site. The site gateway (PDDEG-S) connects securely over the internet to the cloud, and via RS-485 or Ethernet to the controllers on Site.

Our cloud dashboard and API interfaces are SSL encrypted with token-based authentication.

Role based permissions

- Access rights and privileges are managed by simple role-based permissions (least privileges) for the following user roles:

Activities / Roles	Facility manager	Format manager	Site manager/Staff
User management (e.g. workorders, etc)	✓		
Assets and health	✓	✓	
Light control (Concepts and Schedules)	✓	✓	(✓)
Configuration (Design)	✓		
Energy monitoring	✓	✓	

Explanation of the symbols ✓ Possible (✓) Local temporary override only

Azure active directory identity management

- Simplify account and password management by allowing users to securely log in to the Interact dashboard using their existing company email address and password.
- Federating with your existing Azure active directory tenant to invite authorized users and assign corresponding roles. State of the art security measures ensure that your system is protected, and your data is secure.
- Our policies are in accordance with ISO 27001 and IEC 62443-4-1, a security certification for product development processes which ensures that all identified security requirements are implemented, verified, tested, and documented with traceability.



Remote emergency light testing

- Phase 1: PPC Passed, CR Dec 2024
- Reduces maintenance time and cost
- Functional and duration tests
- Actionable test results including failures

Phase 2:
Scheduling and report on
dashboard

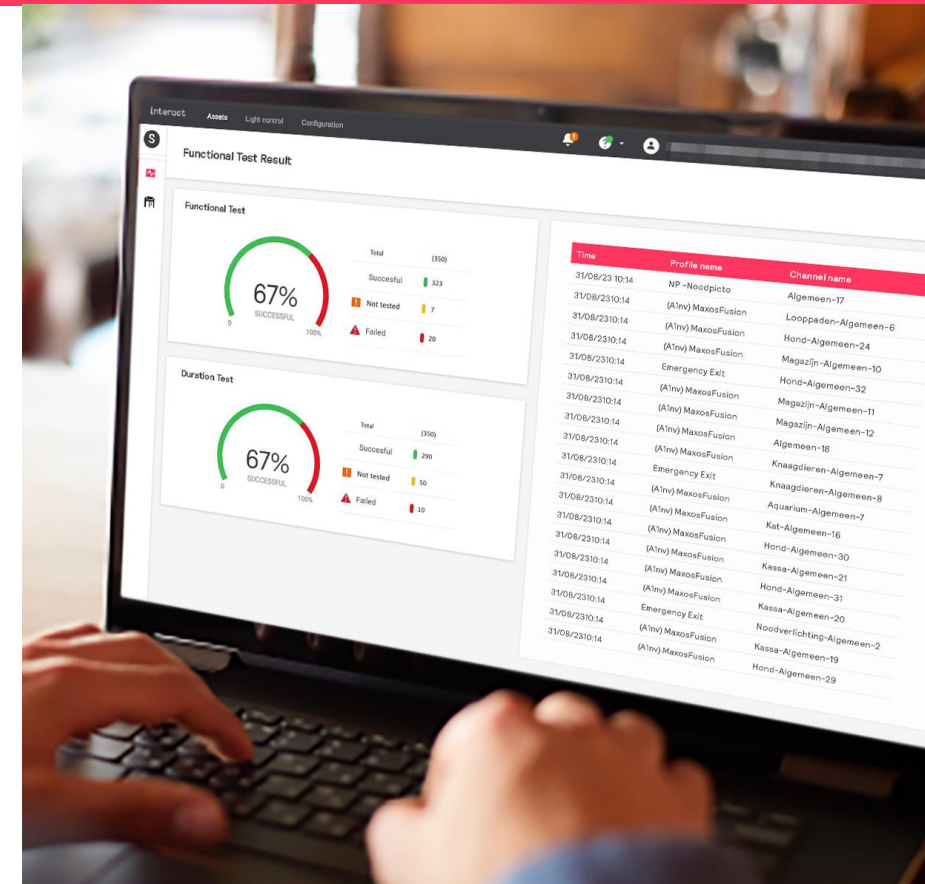
Phase 1:
Report on dashboard

Phase 0:
Manual remote ELT using
SB

- Facility manager can adjust test schedules on dashboard
- Historic test report repository
- Facility manager: Can see and download reports on dashboard
- System Engineer: Can schedule all future tests with System Builder
- Scheduled tests are executed from PDDEG-S and collects results
- System Engineer: Can collect reports with System Builder
- System Engineer: Can trigger test using System Builder

Configuration name	Latest test	Result latest test	Next test	Actions
Full store - Functional	2023-10-25 15:34	Passed	Not scheduled	

Configuration name	Latest test	Result latest test	Next test	Actions
Front of house - Duration - A	2023-10-22 09:00	Passed	Not scheduled	
Front of house - Duration - B	2023-10-11 22:30	Passed	Not scheduled	
Back of house - Duration - A	2023-09-30 23:00	Failure	2023-11-11 22:30	
Back of house - Duration - B	2023-10-17 20:00	Not executed	2023-11-17 20:00	



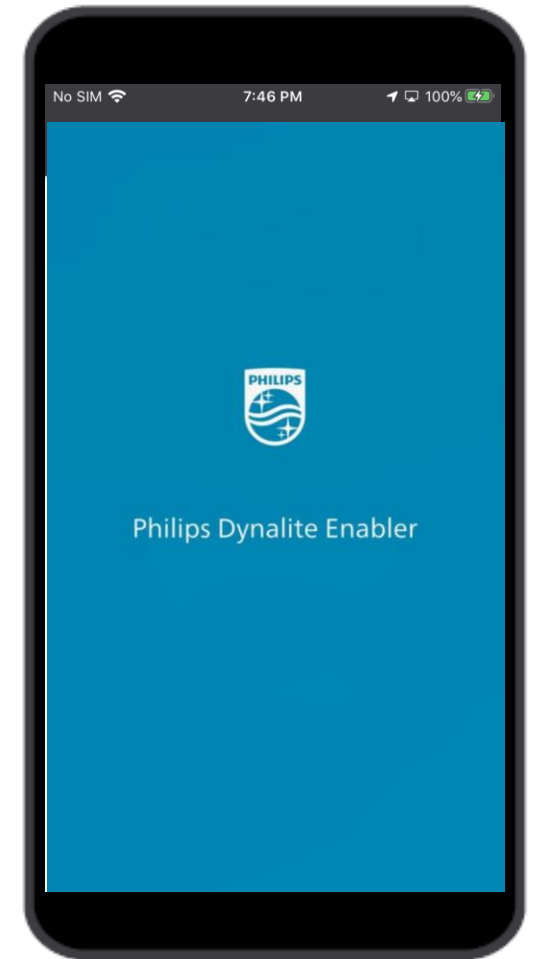
Sample test report

interact

Learning objectives | Software features & functions

In this lesson, you learnt that:

- Concept is a set of scenes
- Multisite dashboard shows all the sites in one single view
- Main system features include:
 - Day & Night modes
 - Schedule and calendar creation
 - 2 hours manual override
 - Energy monitoring and reports
 - Emergency lighting checks



interact

interact