

interact

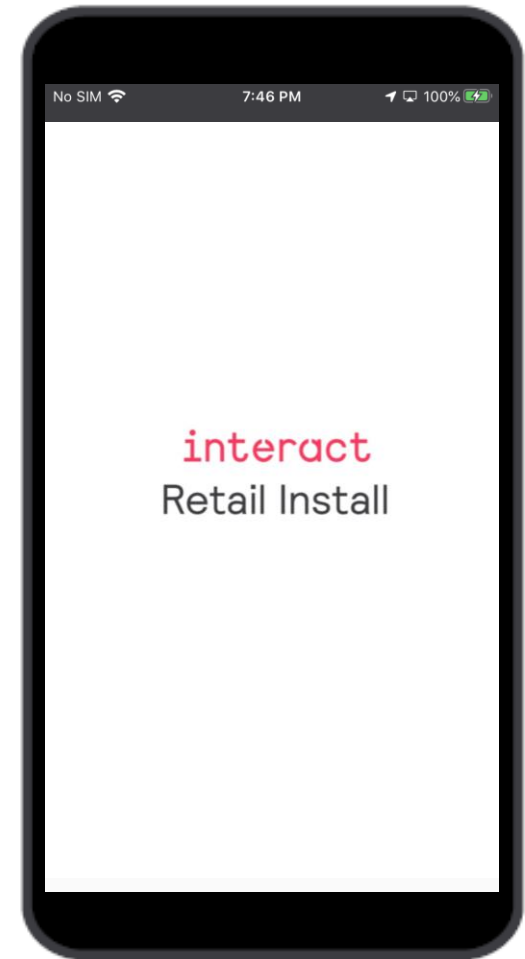
## System architecture

Architecture FLX - Multisite

## Lesson review | System architecture

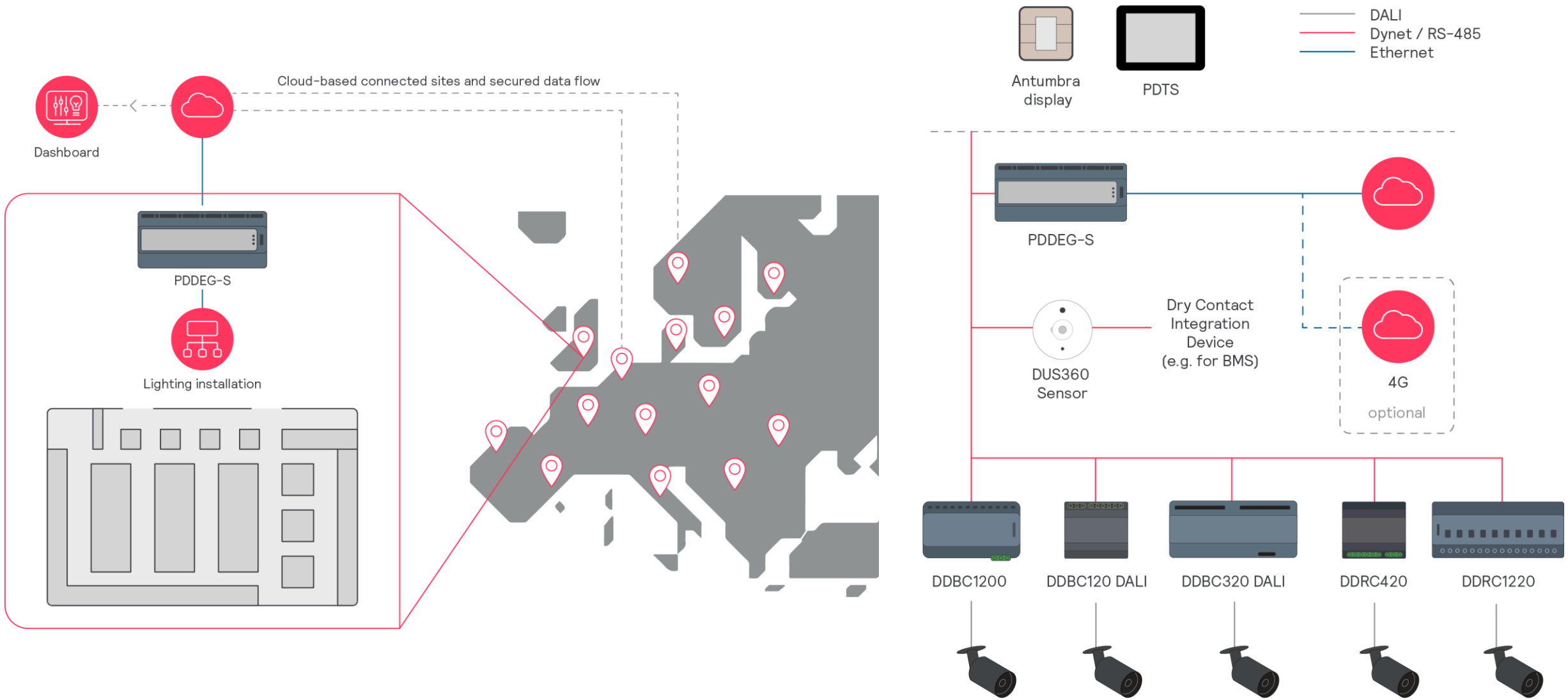
In this lesson, you will learn:

- Why the PDDEG-S gateway is required
- How the cloud connection can be achieved.
- Which BMS integration possibilities are available.
- Which tools have been developed to facilitate store installations.



interact

Multisite architecture



interact

Multisite architecture | products & tools

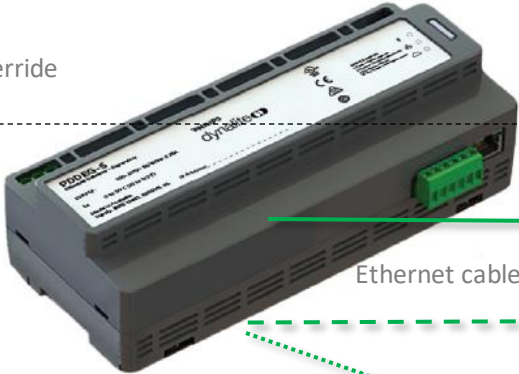
End user UI's



- Antumbra panel UI
- Manual preset selection
  - Manual override

Store-Gateway

Ethernet Gateway Supervisor PDDEG-S



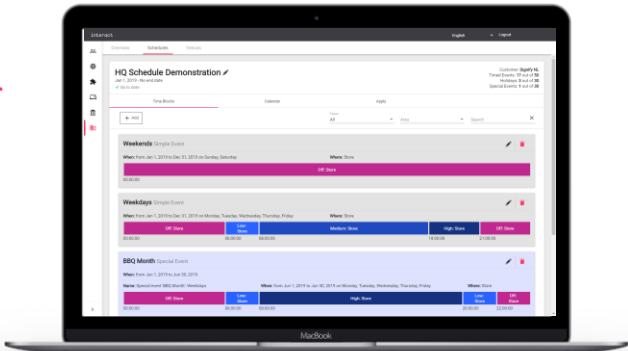
Ethernet cable



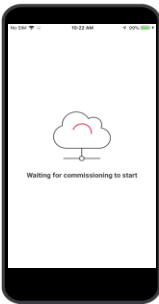
Internet via Customer IT, incl firewall



Optional connectivity service, Vodafone 4G modem + managed SIM card



- Interact Multisite System Manager (MSM)
- Scene creation and editing
  - Schedule creation and editing
  - System Status



- Interact Retail Install app
- Provisioning of gateway to cloud
  - Activate template deployment
  - Functional validation of site

Controllers

DyNet / RS485



DDNP1501 Network power supply

Dynalite Presence/Daylight Sensors



DUS360

Dry Contact integration device e.g. for BMS



DDMIDC8



DDBC1200

DALI cable



DDBC120-DALI

DALI cable



DDBC320-DALI

DALI cable



DDRC420

Power Cable



DDRC1220

Power Cable



(DALI) Luminaire portfolio



Commissioning tools

- System Designer / System Builder
- Template to shorten the onsite commissioning effort.
  - Off-site preparation is executed by system engineer

Interact

## IT requirements – customer IT

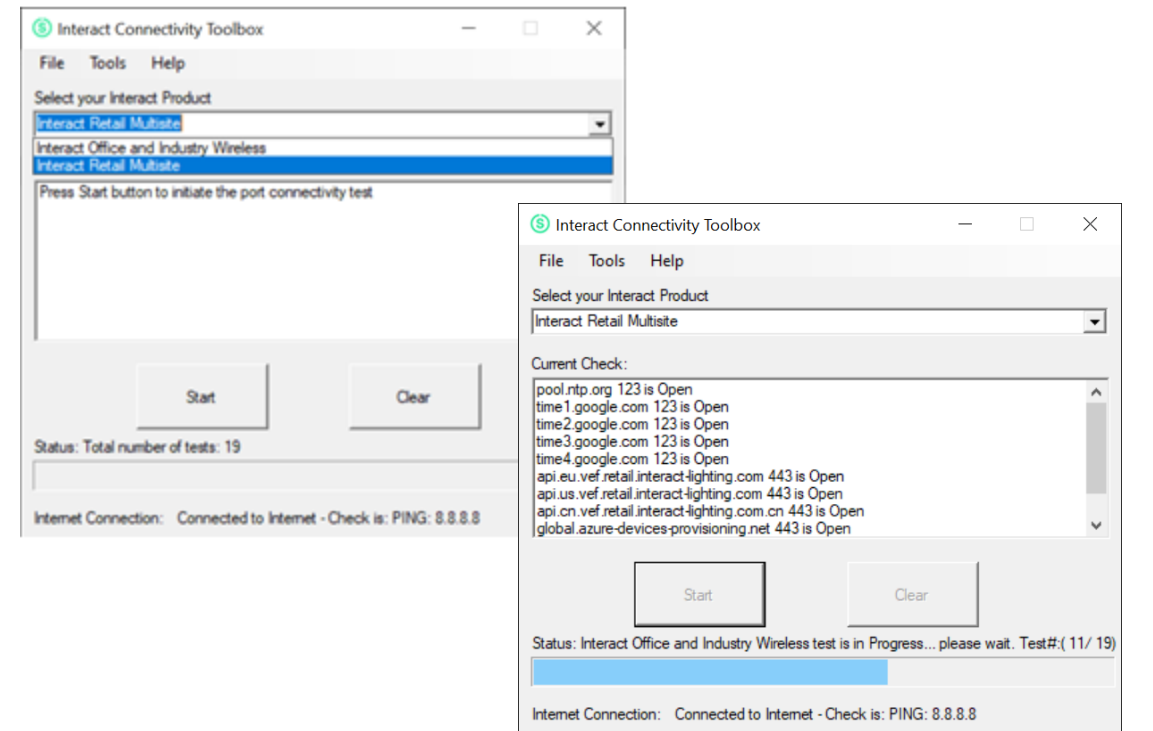
Connectivity provided by customer/retailer:

- ☐ Fully available and functioning @ day of installation
- ☐ Secure internet connection 24/7
- ☐ Open ports for outbound communication (details in table below)
  - ☐ Optionally we provide list of endpoints that need to be whitelisted on the Firewall → Security Statement document, Appendix A
- ☐ NTP (network time protocol) enabled
- ☐ Provide DHCP server (also static IP supported)
- ☐ Firewall preventing inbound connection
- ☐ MDNS discovery enabled (local at store), (only for System builder)
- ☐ No proxy
- ☐ No 802.1x network access control
- ☐ Access to DNS service available
- ☐ Network protocol: we support both: ipv4 & ipv6 (default: ipv4)
- ☐ Nice to have: Provide separate VLAN for lighting
- ☐ Expected traffic per site: up to 1GB / month

Device	Port & Protocol
PDDEG-S	<ul style="list-style-type: none"><li>• 53 DNS (outbound only)</li><li>• 123 NTP (outbound only)</li><li>• 443 HTTPS (outbound only)</li><li>• 5671 AMQP (outbound only)</li><li>• 8883 MQTT (outbound only)</li></ul>

## IT connectivity test tool

- This tool simplifies the audit of the IT infrastructure of a customer, validating if it is ready to install Multisite.
- It can be used by both the customer and the installer.





Lighting management

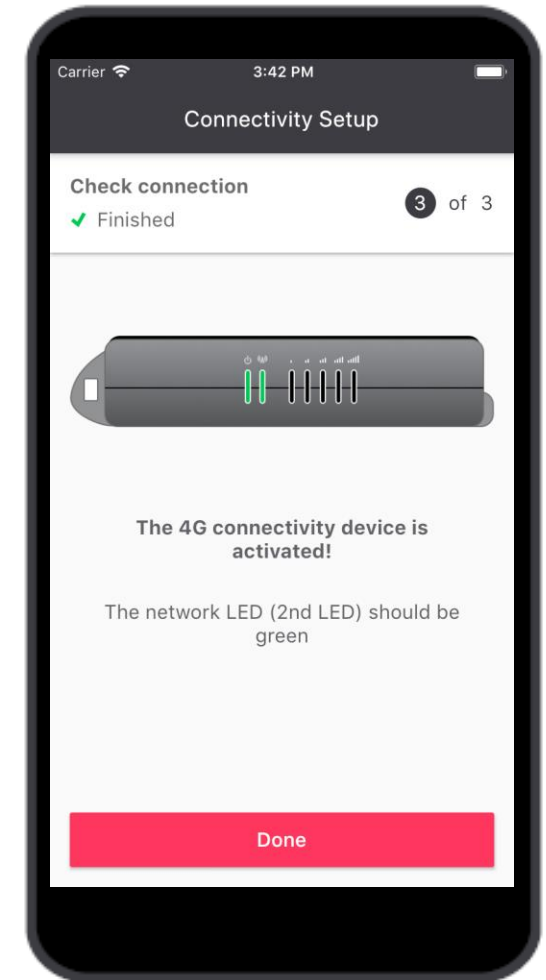
## 4G mobile connectivity

In case fixed line connectivity is not possible, we can offer powerful wireless connectivity from the day of commissioning

- ✓ Hassel free installation and commissioning
- ✓ Includes a secure 4G IoT router delivered in partnership with Vodafone
- ✓ Managed data bundle
- ✓ Broad EU/US coverage: 30 countries



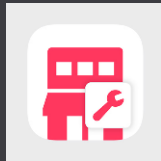
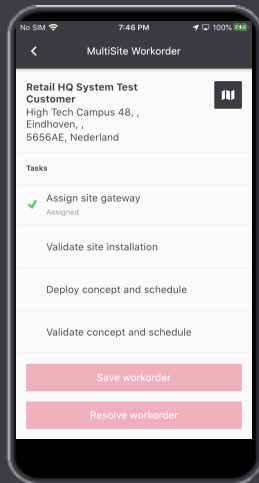
- |                  |               |                  |
|------------------|---------------|------------------|
| • Austria        | • Greece      | • Poland         |
| • Belgium        | • Hungary     | • Portugal       |
| • Bulgaria       | • Ireland     | • Romania        |
| • Croatia        | • Italy       | • Slovakia       |
| • Cyprus         | • Latvia      | • Slovenia       |
| • Czech Republic | • Lithuania   | • Spain          |
| • Denmark        | • Luxembourg  | • Sweden         |
| • Estonia        | • Malta       | • Switzerland    |
| • Finland        | • Netherlands | • United Kingdom |
| • France         | • Norway      | • United States  |
| • Germany        |               |                  |



## Installation and maintenance made easy

### Installer based commissioning

We prepare the digital twin of the lighting system upfront, simplifying the on-site commissioning effort so it can be done by your installer. We provide the installer with an easy-to-use app that guides him step by step through commissioning and validation.



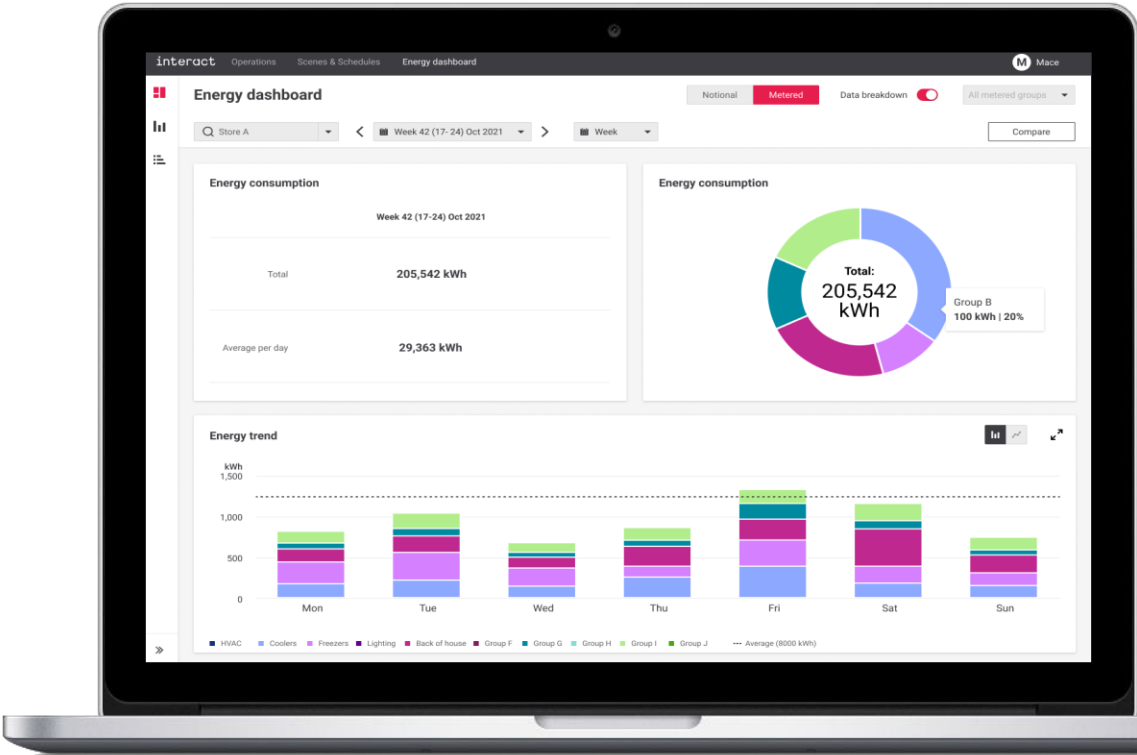
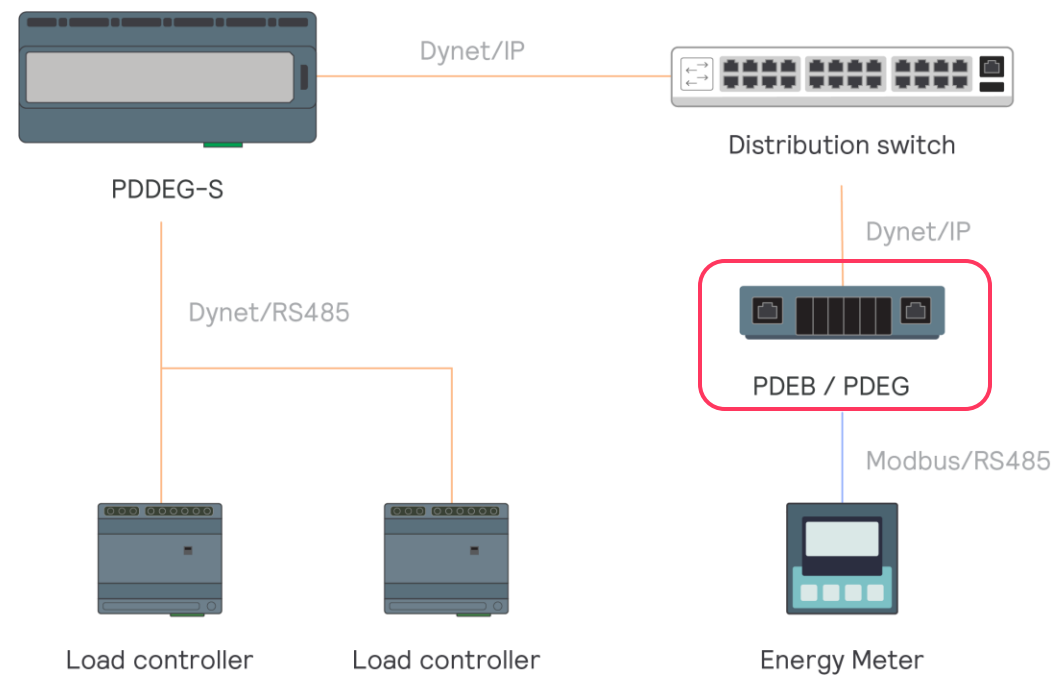
### Self healing

Our Multisite solution has an addressable infrastructure that automatically detects a driver or luminaire replacement and swaps the DALI address from old to new.



Multisite metered energy | Modbus RS485

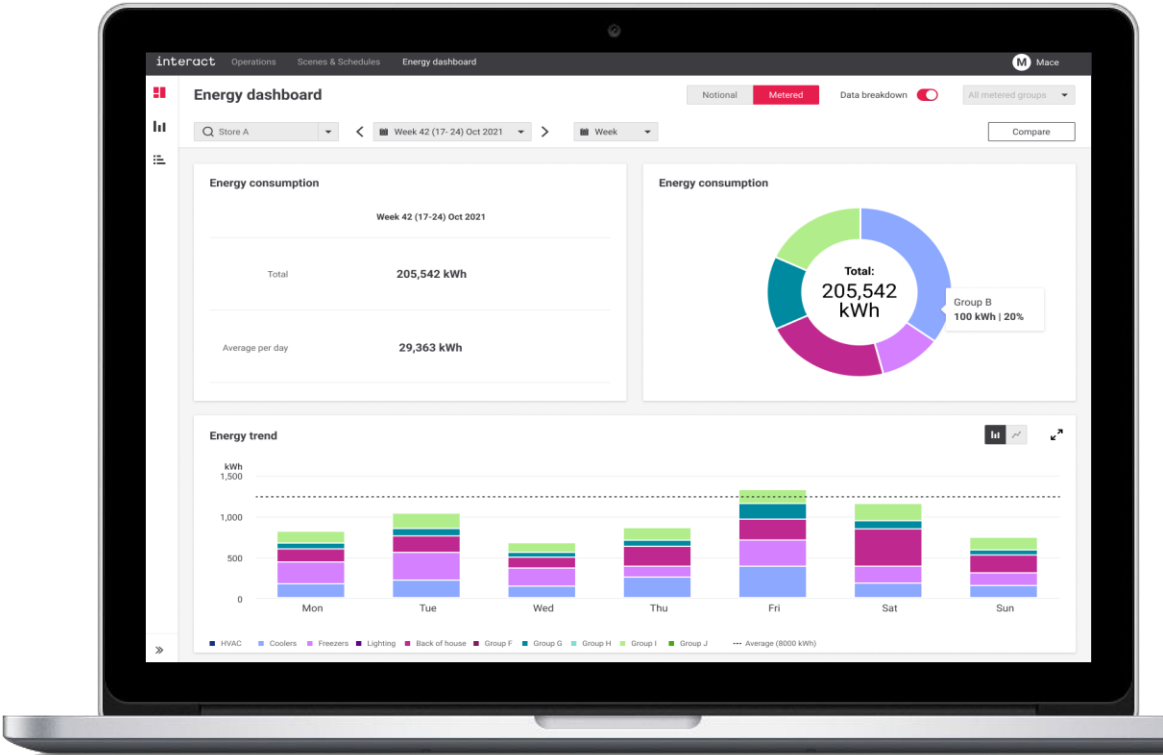
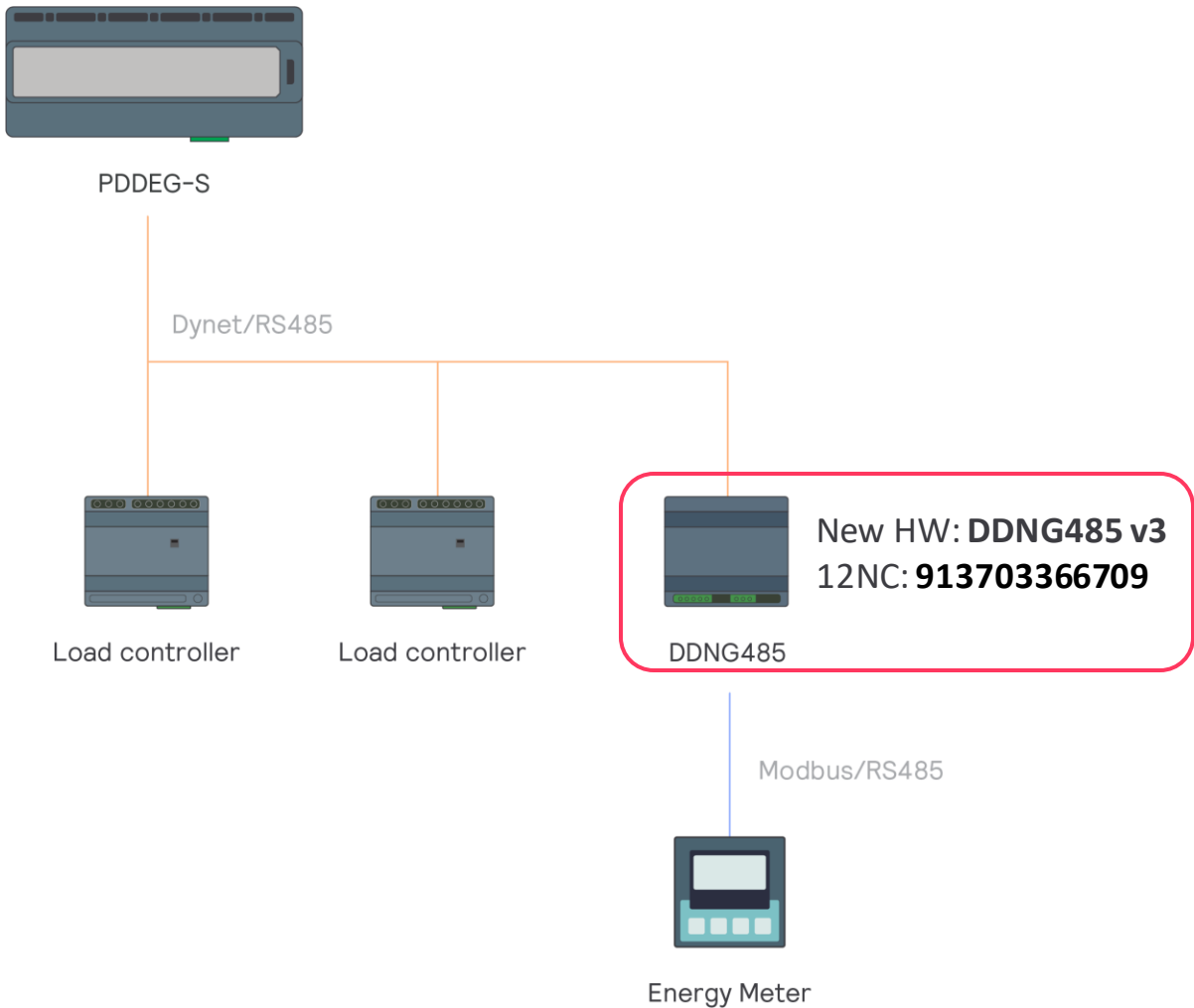
Modbus RS485 - with PDEB/PDEB





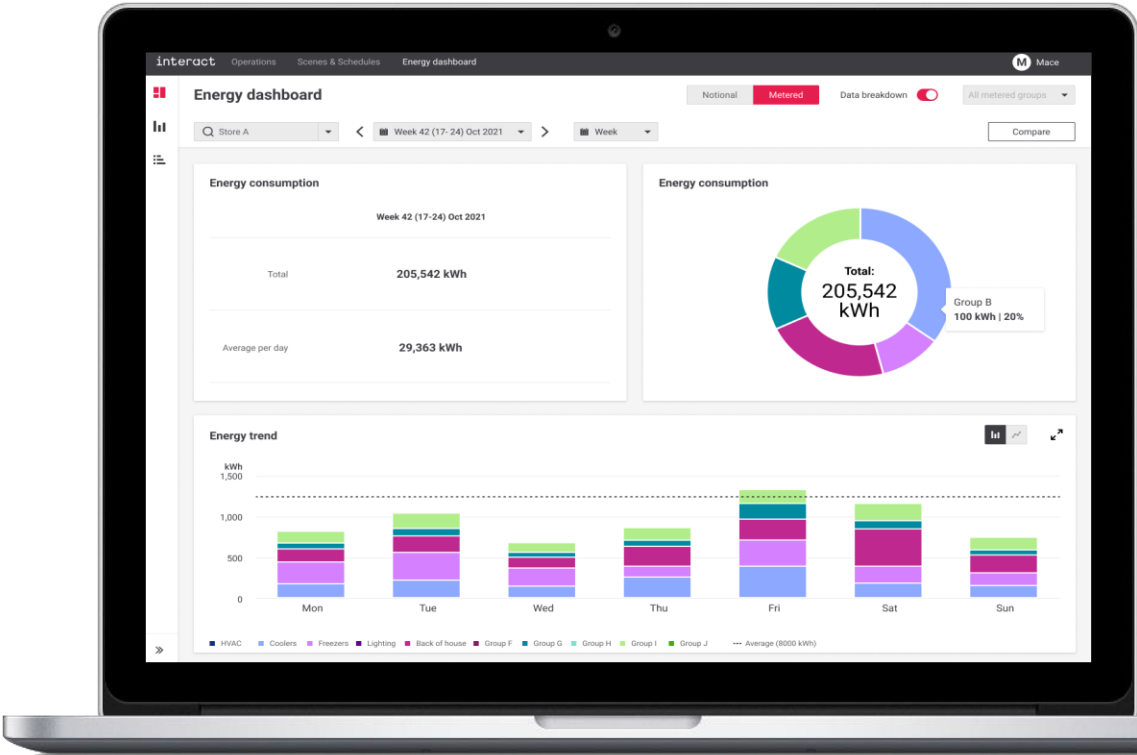
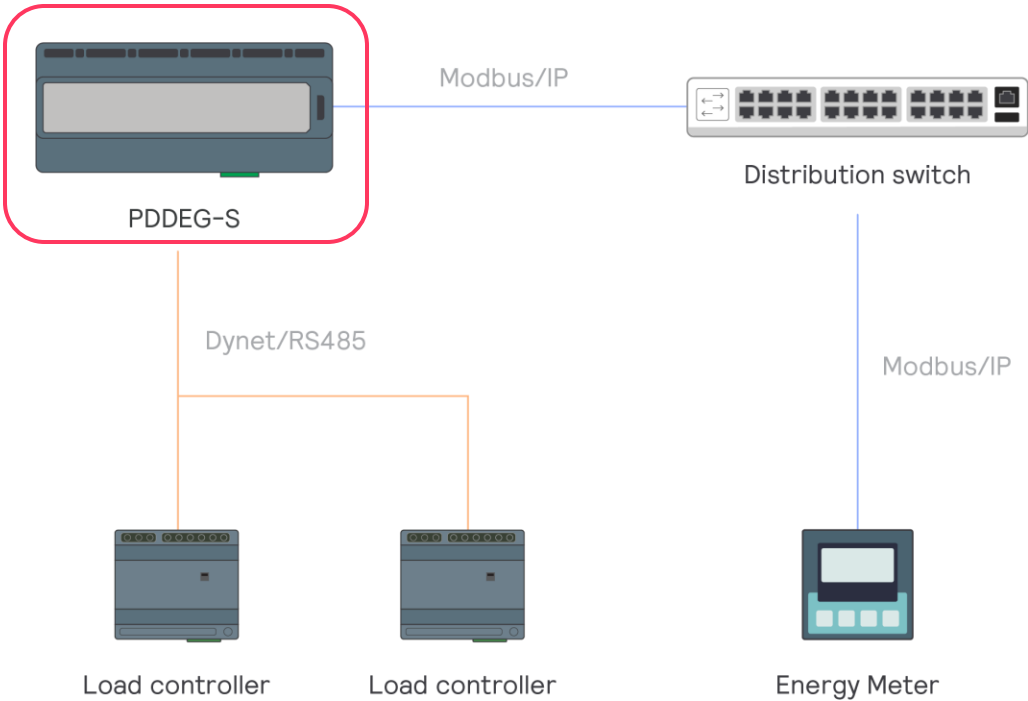
Multisite metered energy | Modbus RS485

Modbus RS485 - with new DDNG485



Multisite metered energy | Modbus IP

Modbus IP - with PDDEG-S Site Gateway

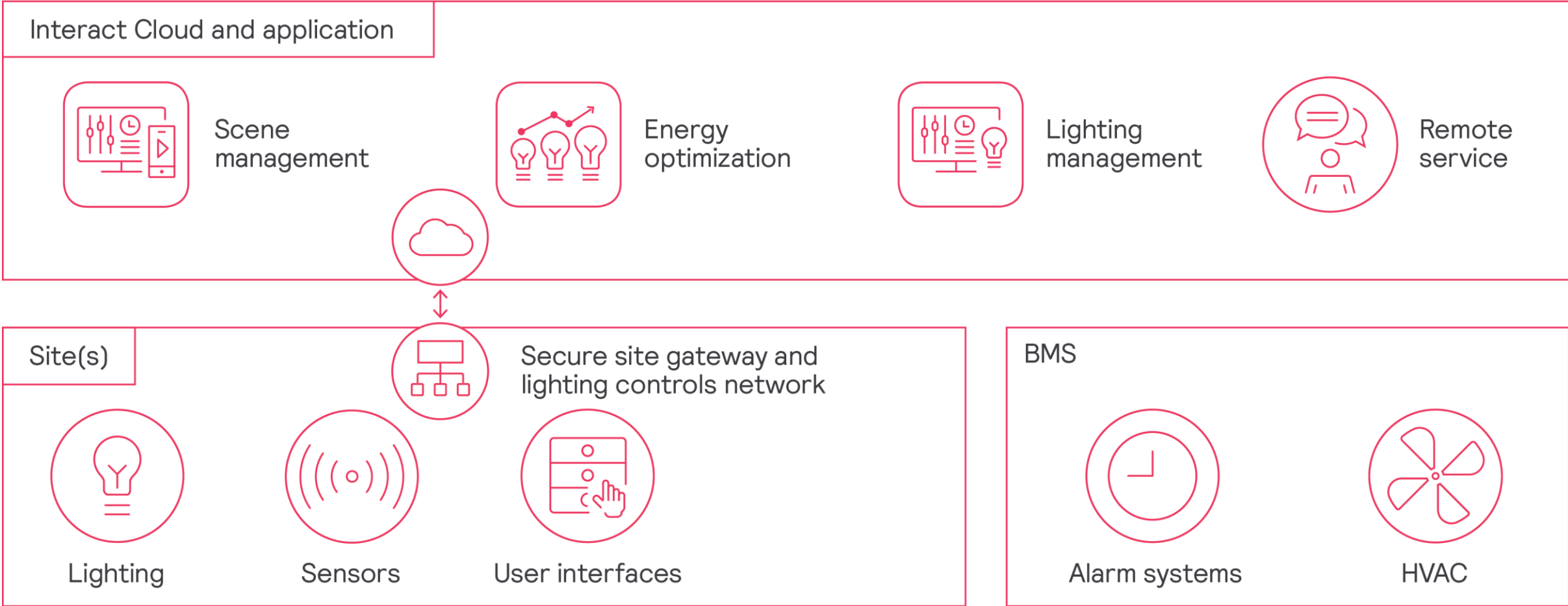




Lighting management

Integration

- ✓ Onsite integration with Alarm and BMS systems
- ✓ Large variety of local manual override options
- ✓ Support of common interfaces: Dry contact | BACnet | CGI





Store safety

## UV-C upper air disinfection

- ✓ Shoppers and employees can now feel safer thanks to Philips UV-C upper air disinfection luminaires
- ✓ Validated 99.99% effectiveness within only 10 min
- ✓ Extend lifetime of UV-C light sources by automatic schedules to operate them only during trading hours

[Proofpoint: EDEKA Clausen Germany >](#)

[Proofpoint: dm drugstore Bratislava >](#)

[Learn more on validated 99.99% effectiveness to deactivate pathogens within 10 min exposure >](#)

**“It provides me with a bit of peace of mind while shopping, knowing that they did their best to protect their clients.”**

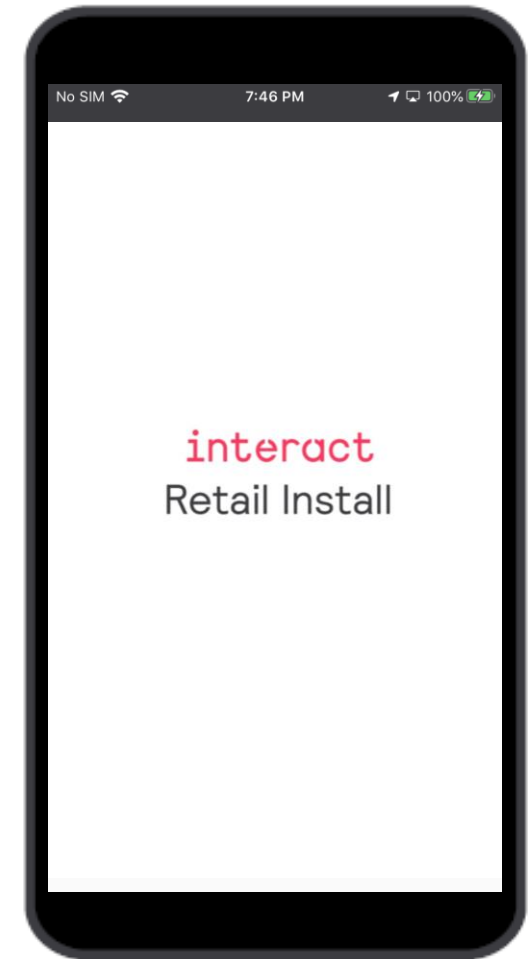


**interact**

## Lesson review | System architecture

In this lesson, you learnt that:

- Interact retail is based on Dynalite with the addition of a PDDEG-S gateway.
- A test tool has been developed for testing the connectivity.
- Interact retail install app tool has also been developed to facilitate onsite commissioning.
- Multisite can integrate with the customer's BMS either at store level through a dry contact or a JACE box, or cloud level.



interact

interact