

interact

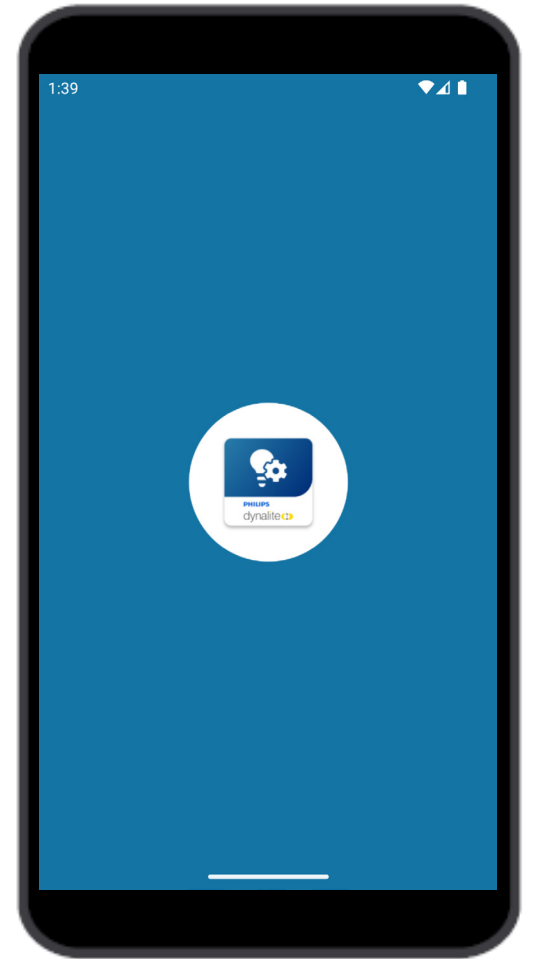
Software features & functions

Architecture FLX - Multisite

Learning objectives | Software features & functions

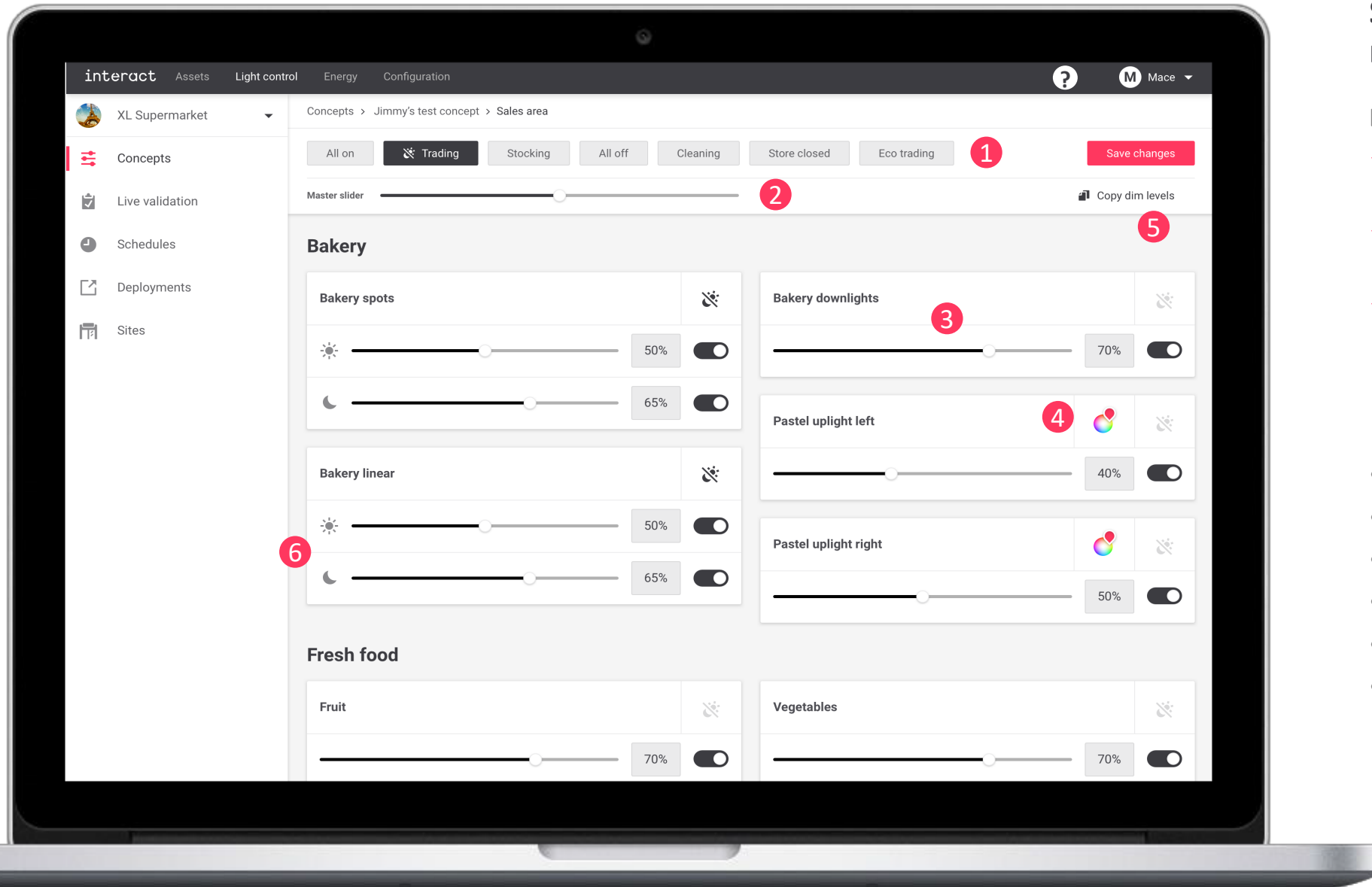
At the end of this lesson, you will:

- Be familiarized with the dashboard.
- List all possibilities of Multisite.



interact

<https://www.eu.retail.interact-lighting.com/>



Light control Scene & schedule management



Light control

- ✓ Adjust light levels to your needs remotely
- ✓ Live validation to preview the changes on an actual site
- ✓ Secure user authentication, profile-based management and multi-language support

- Multiple Scenes per area 1
- Master dim slider 2
- Dim slider for every channel 3
- RGB colored lighting support 4
- Copy and clone function 5
- Day/night mode (astro clock) 6

Light control

Concepts

Live validation

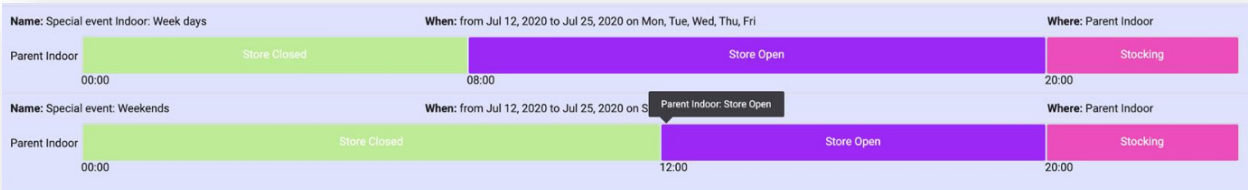
Schedules

Deployments

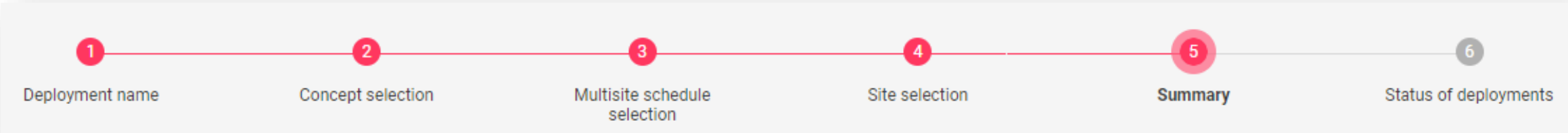
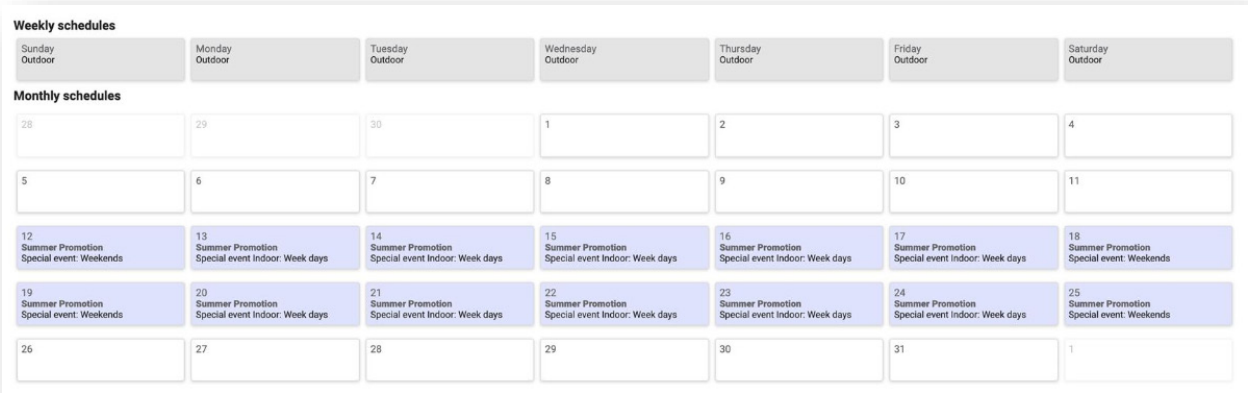
Sites

- Define what | light levels & scenes
- Pilot on one site
- Define when | 24h schedules + calendar
- Define what & where
- See what is running at a site

✓ Guided steps to deploy your adjustments to the correct subset of your sites



✓ Intuitive schedule creation and calendar adjustment



“We can now adapt the light settings within the same day and deploy this to any number of stores connected to the Multisite system. This will help us to reduce our operational expenses and meet our sustainability targets.”

interact



Light control

Local manual override

Touch panel for local manual override provides the store owner flexibility by adjusting lights quickly on the spot:

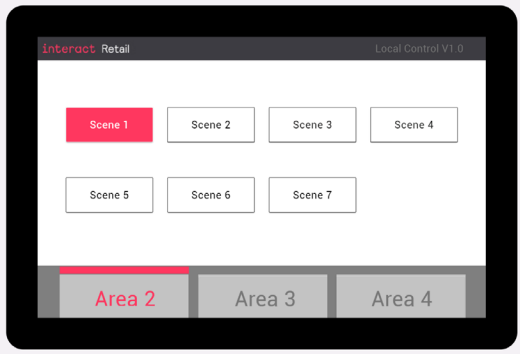
- ✓ Allows to select one of the presets per area
- ✓ Lighting switches automatically back to the schedule after two hours

Your existing Interactstore (or StoreWise store) can be easily upgraded to Multisite

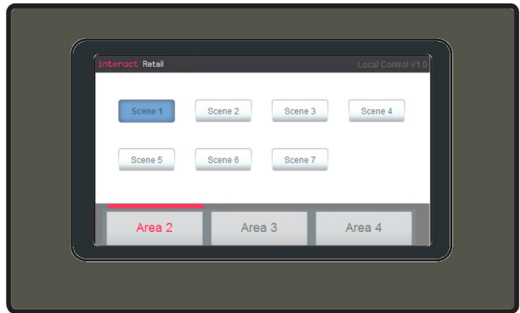
- ✓ Reusing existing lighting controls infrastructure and adding a new site gateway
- ✓ Detailed workflow and required tools are available

Monitor remotely compliance to centrally deployed scenes and schedules

- ✓ Zoom live into individual stores to see actually running scenes and next upcoming scenes

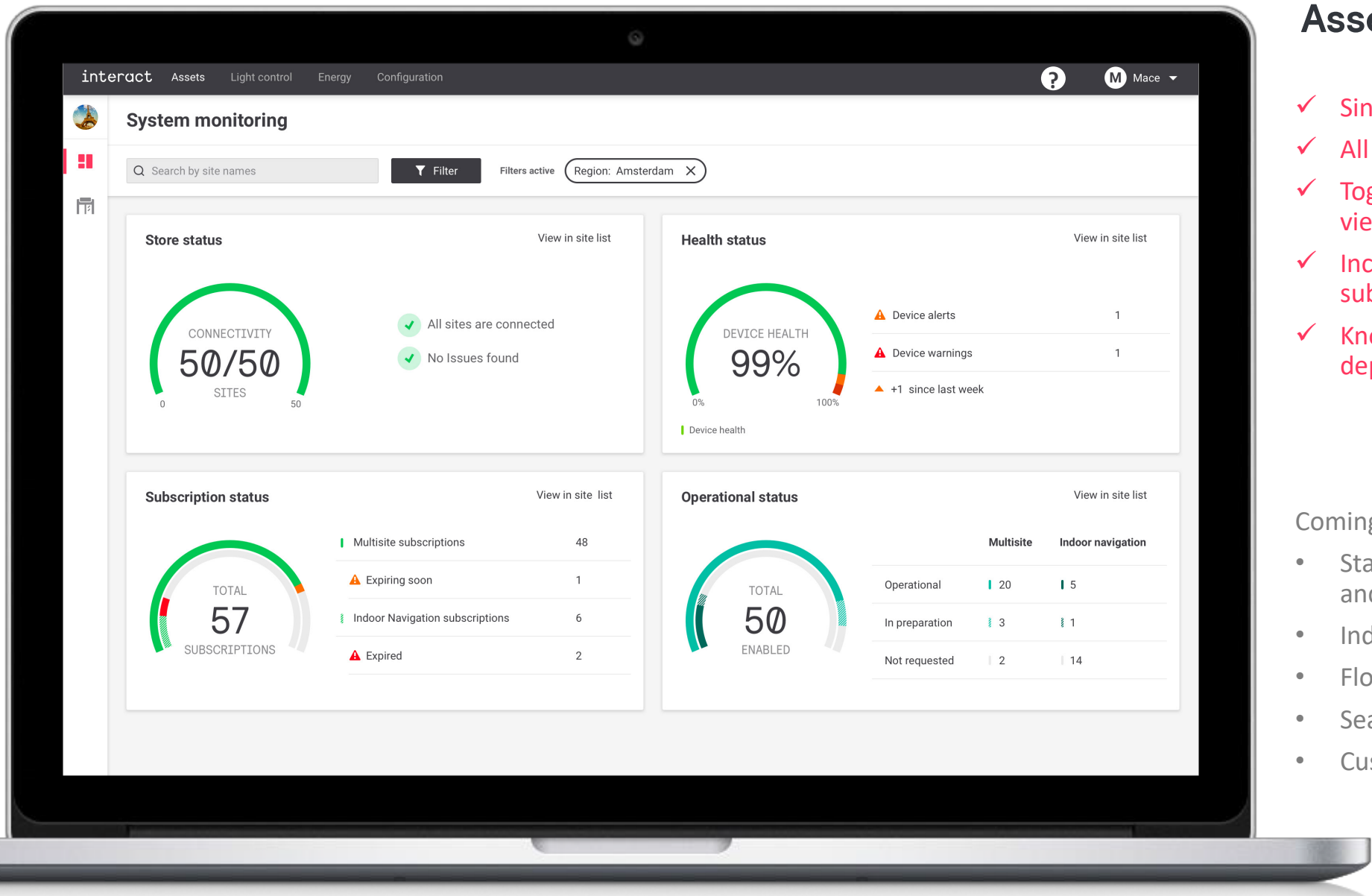


PDTS touch panel



Upgrading installed DTP100 touch panel

Area ↕	Scheduled scene ↕	Active scene ↕	Next scene (Local Time) ↕
Back of House	Stocking	Stocking	Trading, tomorrow @ 09:00
Outdoor	All Off	All Off	All Off, tomorrow @ 09:00
Sales Floor	Stocking	Stocking	Trading, tomorrow @ 09:00



Lighting management

Asset overview



- ✓ Single dashboard showing system health
- ✓ All your sites in one overview
- ✓ Toggle between list view and detailed site view
- ✓ Includes the status of licenses and subscriptions
- ✓ Know which sites are operational or in deployment

Coming soon:

- Status of all network controllers, panels and sensors
- Individual light point failures
- Floorplan
- Search and filter functions
- Custom tags for subset of sites



Lighting management

Multisite performance monitoring report

You are entitled to an insightful quarterly / monthly report summarizing performance of all your connected sites:

- ✓ Notional energy consumption and energy savings
- ✓ Carbon footprint reduction
- ✓ # of saved site visits by remote bulk updates of scenes and schedules
- ✓ Historical compliance to centrally deployed scenes
- ✓ Overview of all your sites and active services
- ✓ Subscriptions expiring soon
- ✓ Historical online status and site health

7. Energy consumption and Energy savings

	This period	Previous period
Sites for energy reporting	5	3
Energy consumption		
Total of all sites	4795.86 kWh	2597.95 kWh
Average per site	959.17 kWh	519.59 kWh
Energy savings		
Total of all sites	5071.63 kWh	3293.08 kWh
Average per site	1014.32 kWh	658.61 kWh
Percentage	51.40%	55.90%

The five sites with most energy savings

Site ID	Site name	Energy consumption*	Energy savings**	Energy savings
123	Store Amsterdam	1073.94 kWh	2664.66 kWh	71.27%
124	Store Berlin	1245.65 kWh	1024.34 kWh	45.13%
125	Store London	952.26 kWh	754.21 kWh	44.20%
126	Store Paris	823.78 kWh	327.97 kWh	28.48%
127	Store Rome	700.23 kWh	300.45 kWh	30.02%

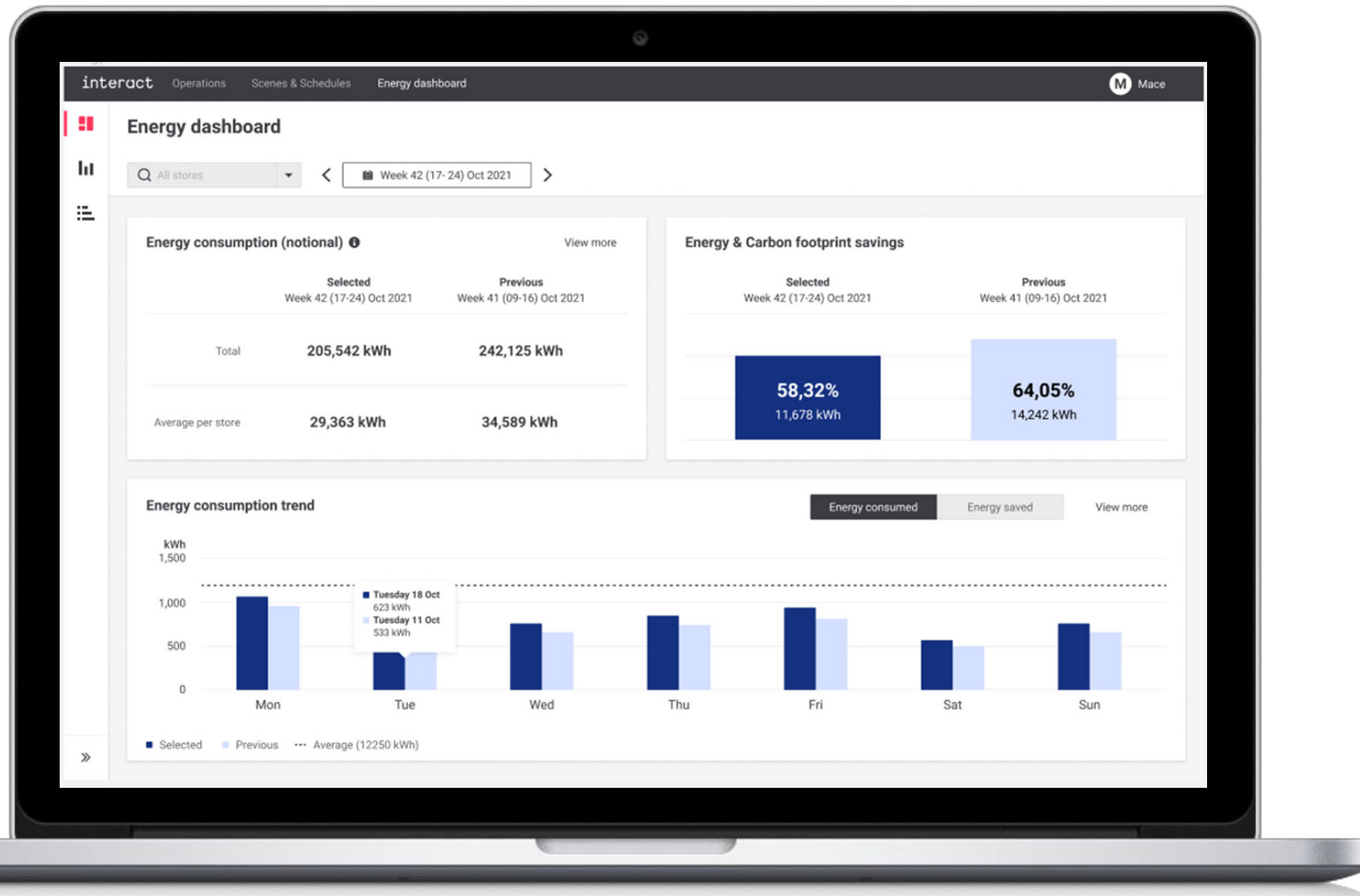
“Our new energy reporting feature provides calculated energy consumption data for all your connected stores.”

Energy monitoring



- Glanceable dashboard
- Historical energy consumption trends
- Energy savings breakdown
- Site comparison
- Outlier analysis
- Alerts & reporting

⇒ Understand your energy consumption and optimize energy savings





Lighting management

Remote emergency lighting testing service

Store safety is key, and regular health checks of emergency lighting is mandatory. Save precious time by triggering emergency light tests remotely via our system experts.

- ✓ Trigger functional test and duration tests
- ✓ Query emergency test results
- ✓ Historical test results
- ✓ Get confirmation that your emergency lighting operates correctly on battery



Execution excellence

Remote post install tuning service

Remote expert support to facilitate post install fine tuning and configuration adjustments

- ✓ Supports fast and more reliable project execution
- ✓ Robust commissioning process to safeguard delivery on time
- ✓ No need for additional onsite visits after project handover



Multilanguage support

- ✓ Customize the language of your dashboard to your own preferences. Select one of the following languages:

- Danish
- Dutch
- English
- French
- German
- Italian
- Polish
- Portuguese
- Russian
- Spanish



User guide & latest release notes

- ✓ Easily online available via Interactportal

<https://www.eu.retail.interact-lighting.com/> ▶



Online market demonstration tool

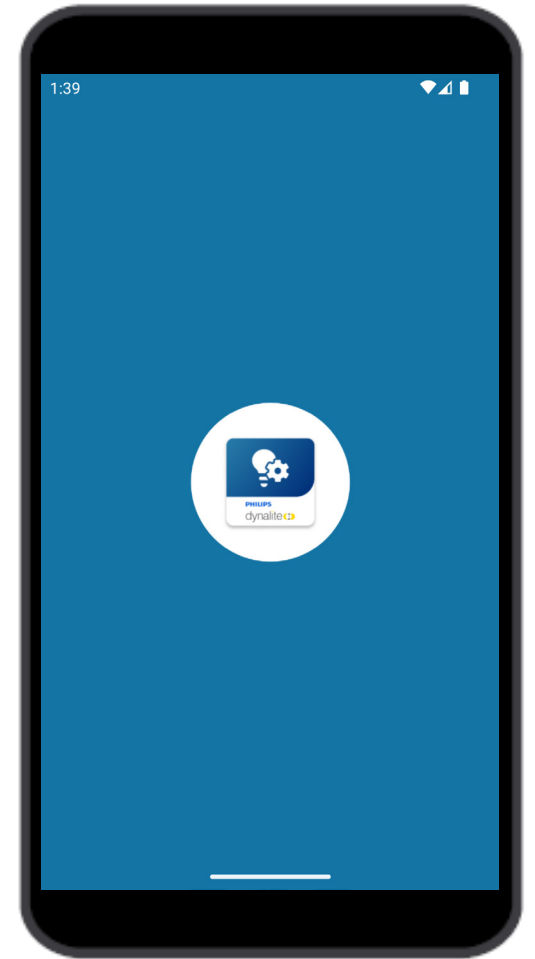
- ✓ This updated feature allows to demonstrate the Multisite dashboard and its functionality to end users such as facility managers and format managers at a retailer.
- ✓ It has been extended with more sites and it now also allows to preview upcoming energy reporting dashboard features.



Learning objectives | Software features & functions

In this lesson, you learnt that:

- Concept is a set of scenes
- Multisite dashboard shows all the sites in one single view
- Main system features include:
 - Day & Night modes
 - Schedule and calendar creation
 - 2 hours manual override
 - Energy monitoring and reports
 - Emergency lighting checks



interact

interact