

# interact



## Multisite System Manager

# Remotely run your sites to drive energy efficiency and sustainability

### Software Features & Integrations

Find out more about Interact

[www.interact-lighting.com](http://www.interact-lighting.com)



Real-time visibility & control

05



Scenes & schedules

07



Energy monitoring

09



Reporting

13



Services

15



Optional - Remote Operations

16



Integrations & APIs

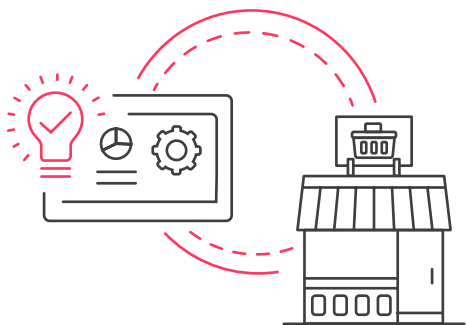
17



Complete System Security

19

## Effectively monitor and manage the lighting of all your sites

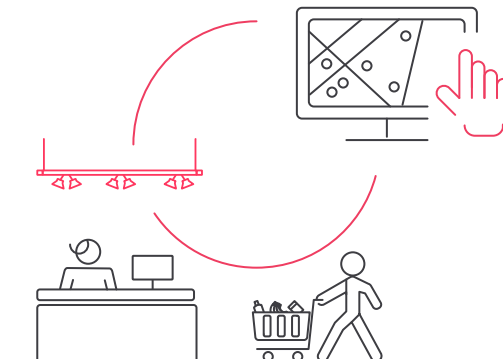


### Optimize energy consumption

- Define automated schedules and dimming scenes that run your sites more energy efficiently and sustainably.
- Measure the effects with the energy dashboard and drive continuous improvement.
- Utilize daylight sensors and occupancy sensors to adjust lighting levels automatically ensuring optimal energy usage at all times.

### Enhance space and experiences

- Drive traffic, conversion and loyalty with impactful ambiance and superior light at the right time and place.
- Easily deploy new settings to large groups of sites.
- Ensure a consistent brand image.

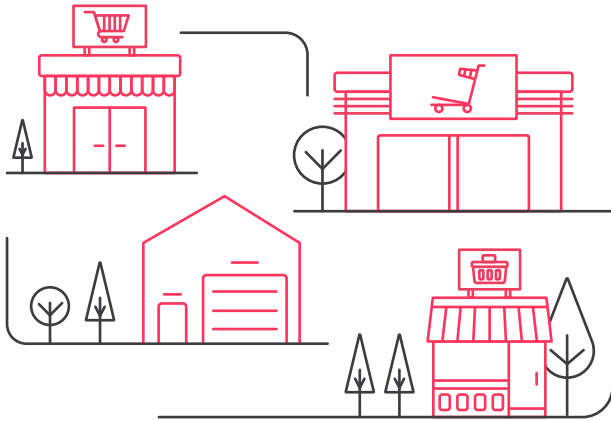


### Strengthen operational excellence

- Monitor and manage your sites remotely from a single central dashboard.
- Gain clear insights in the operational status of your sites without the hassle of site visits.
- Simplify mandatory tests of emergency lighting.



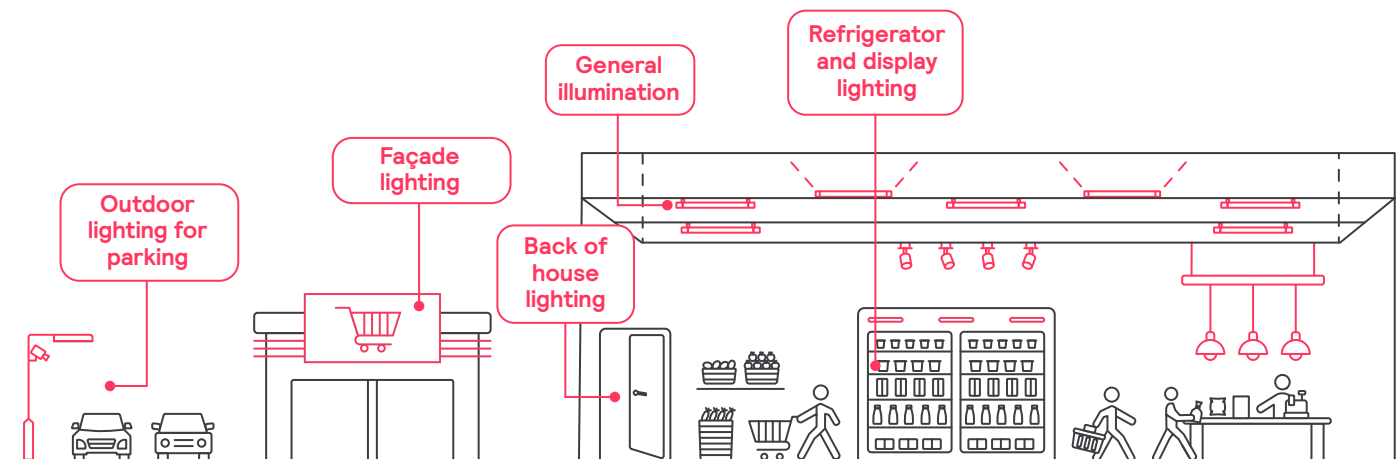
## Tailored to support your business



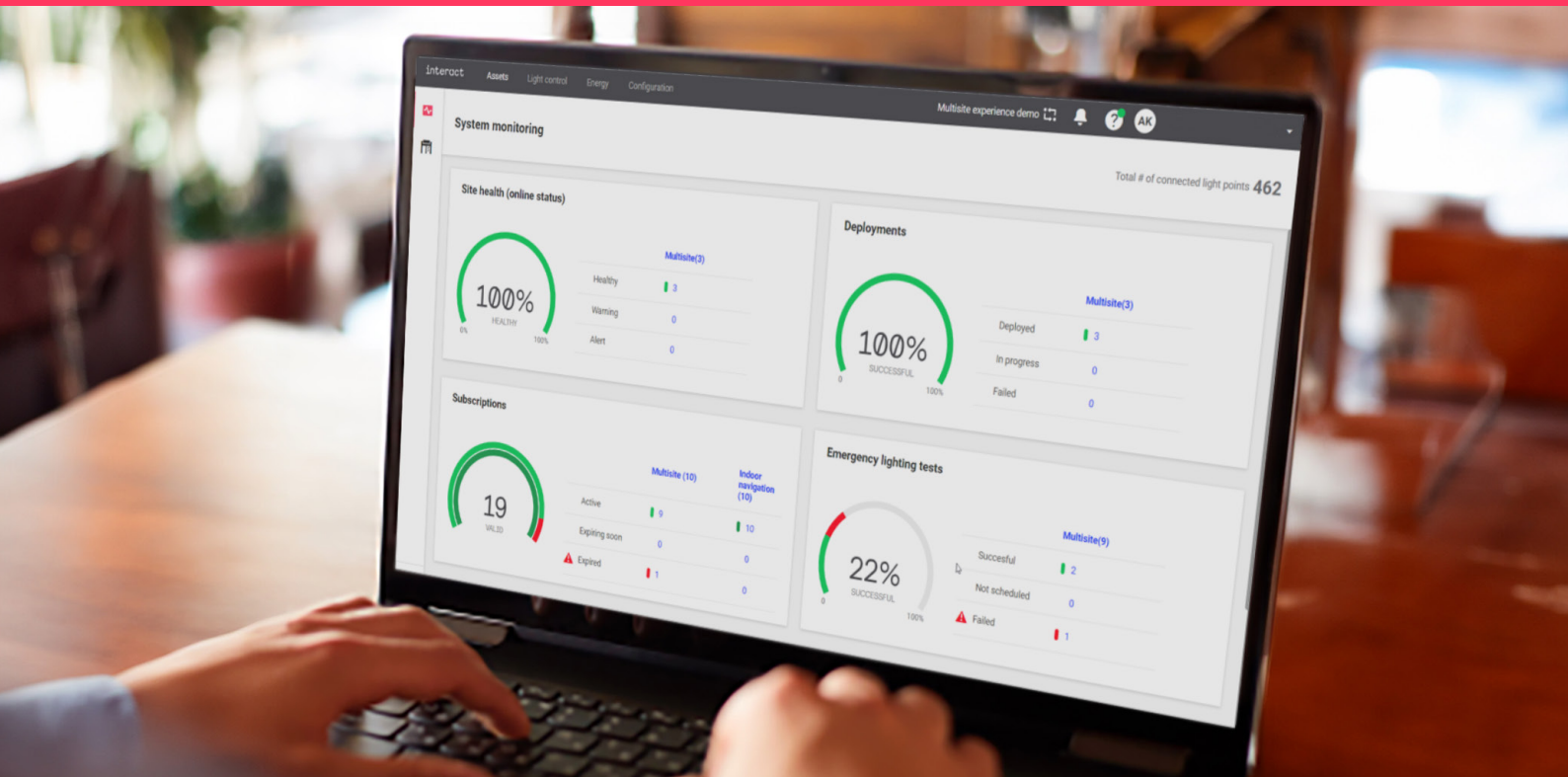
### Suits all store formats...

- **Convenience:** Smaller local stores and express formats.
- **Supermarket:** Larger supermarket and DIY retails.
- **Hypermarket:** Very large out of town and department stores
- **Distribution centers:** warehouses and dislocated pick-up points

### ... and all control areas



### Centralized control and local override



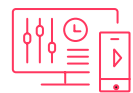
## Monitor and manage lighting remotely across all sites in a single, unified view

### Multisite dashboard

Our intuitive dashboard makes it easy to create versatile and attractive retail spaces, and allows you to manage, monitor and adjust the lighting remotely over all sites.

At your glanceable dashboard, you will gain insight in energy consumption patterns of your store lighting, and energy savings of a site for a selected period.

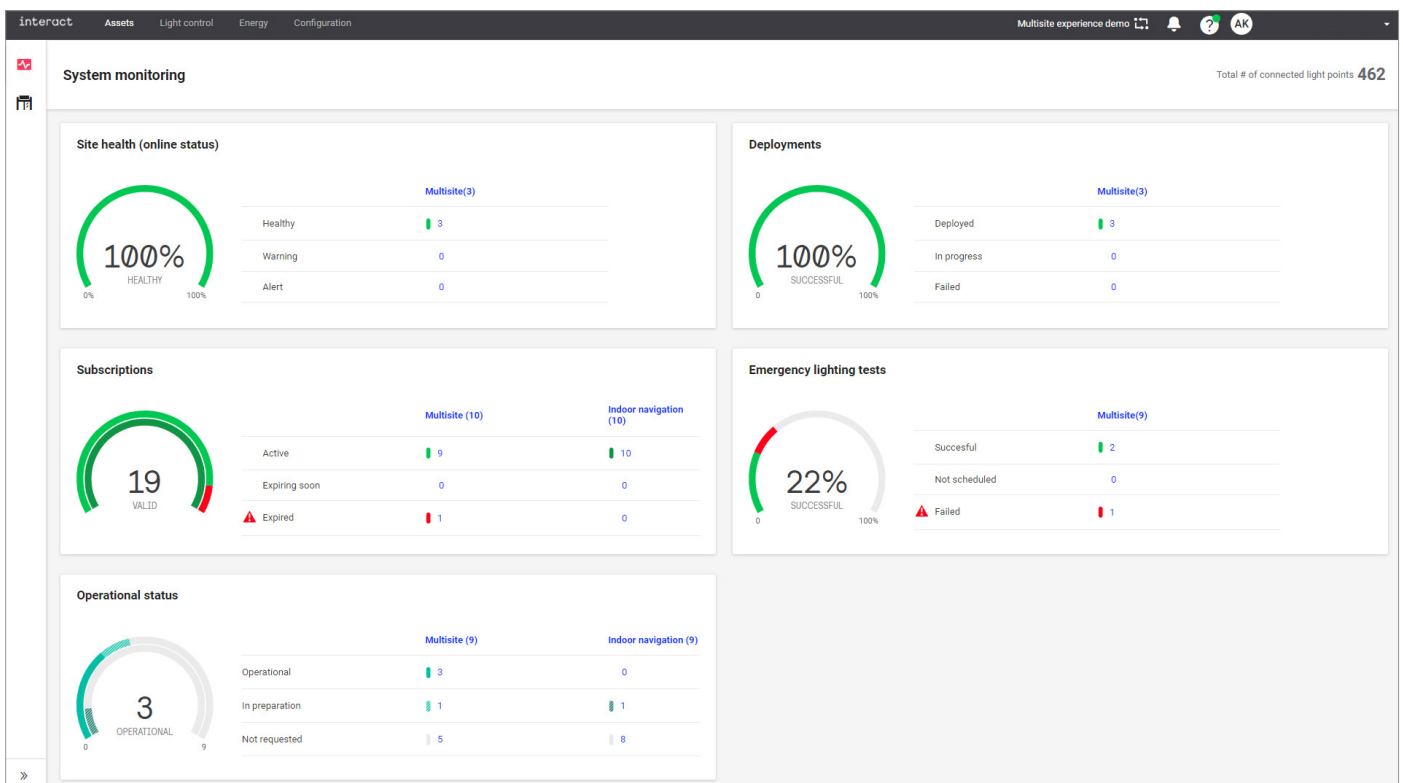
Use your dashboard to analyze the energy consumption of your stores, to define optimized lighting schedules and dimming settings and deploy these to all your stores in one go.





## Asset overview

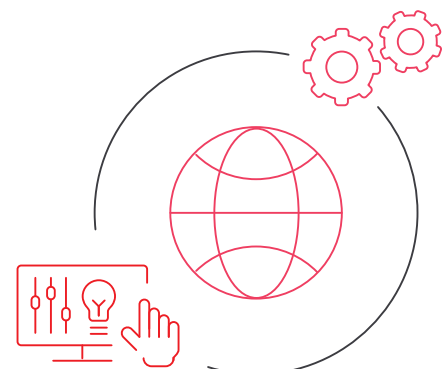
- Single dashboard showing system health
- See all your site in one overview
- Toggle between list view and detailed site view
- Includes the status of licenses and subscriptions
- Know which sites are fully operational or upcoming
- Monitor live which scenes are running on every site
- Successful updates of light configurations



## Multilanguage support

Secure user authentication, profile-based management and multi-language support:

- Danish
- Dutch
- English
- French
- German
- Italian
- Japanese
- Polish
- Portuguese
- Russian
- Spanish







## Achieve reliable energy savings and enhance customer experience

Through a single intuitive dashboard, Multisite makes it easy to create stunning and flexible retail spaces. You can monitor and control the lighting remotely over all sites by adjusting centralized scheduling and scene settings for extra energy savings.



Simply adjust the lighting to your needs within the same day and deploy to any number of sites, for example when the opening hours change.



Save site visits through remote lighting adjustments. Create seasonal schedules and save additional energy by dimming during winter when it gets dark earlier.

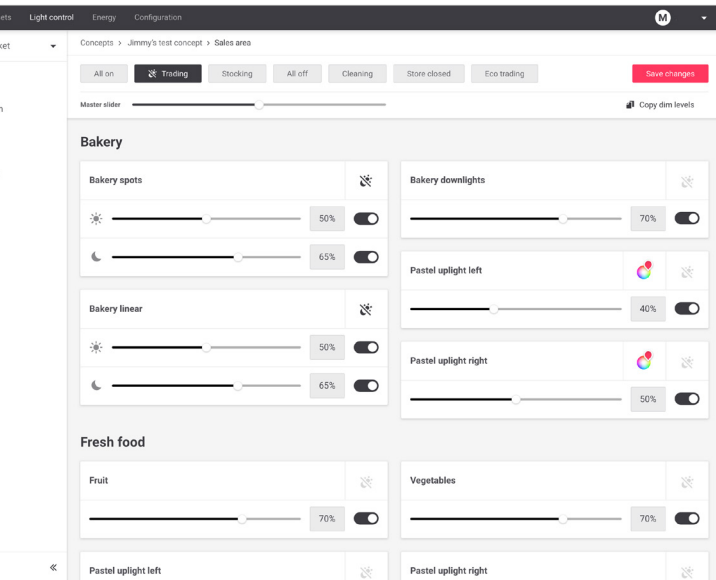


Help reducing operational expenses based on meaningful insights of your energy consumption and meet your sustainability targets too.



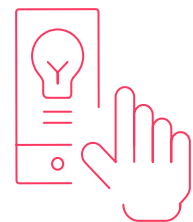
## Scene adjustment

- Remotely adjust light levels to your needs
- Live validation to preview the changes on an actual site
- Zoning
- Day/night mode to support the astronomical clock feature
- Adjust fade time



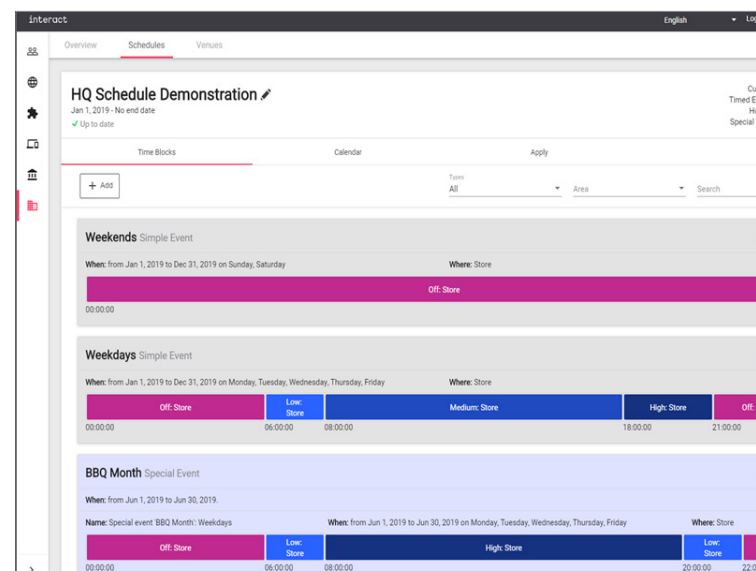
## Intuitive user interface

- Adapt light settings the same day for any number of connected sites
- **What:** Define light levels and scenes, piloting on site possible
- **When:** Define 24h schedules and calendar
- **Where:** Define what to apply where
- Master dim slider per scene for quick adjustments
- Convenient copy and clone functions

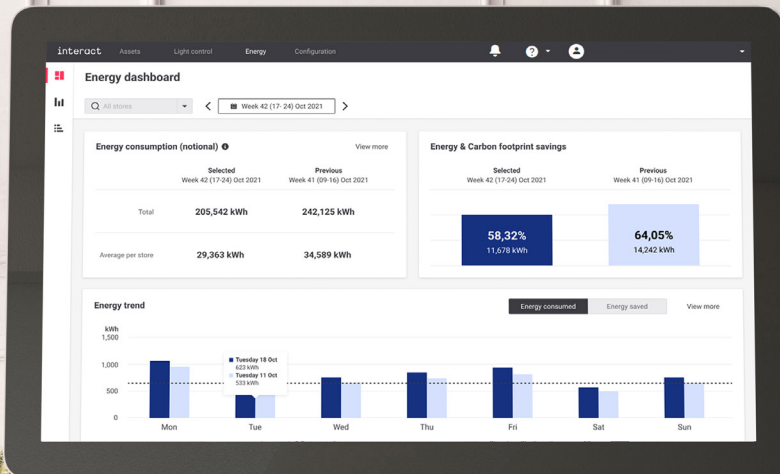


## Schedule adjustment

- Intuitive wizard that helps with schedule creation and calendar adjustments
- Guided steps to deploy your adjustments to all sites or the correct subset of your sites (batch updates)
- Zoom in to view individual stores: see what is running & upcoming scenes



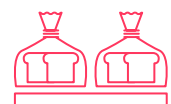




## Make informed decisions with rich energy monitoring

Gain insight in energy consumption patterns of your connected sites and implement best practices. At your glanceable dashboard, you will get a quick overview of the energy consumption and energy savings of one or all sites for a selected period.

- Evaluate the savings with the intuitive weekly and monthly comparisons.
- You can easily sort and rank all the sites in your portfolio using the site list.
- Identify outliers and thereby bringing the quick wins to your fingertips.



The energy dashboard visualizes both notional as well as metered energy data. Understanding energy consumption patterns helps you to optimize savings to maximize the benefits of your lighting refurbishment.

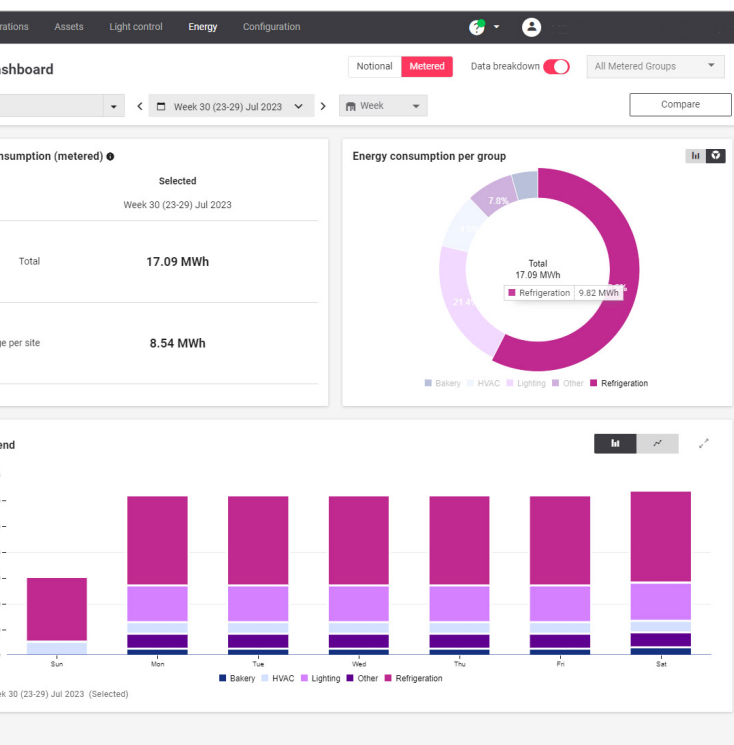
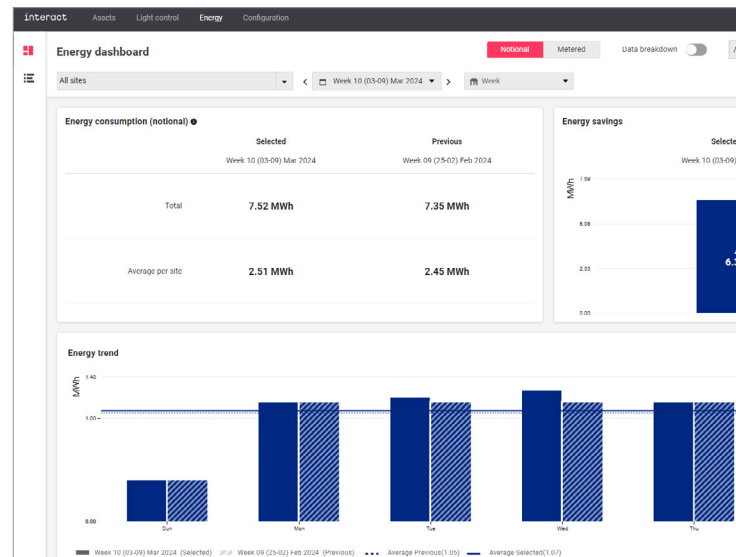


## Energy dashboard for notional energy

The energy dashboard provides insights in the energy consumption and savings of the lighting of all your sites. It shows you the most relevant parameters, including:

- Energy consumption and savings
- Split: Dim savings and On/Off savings
- Historical energy trend compared with the previous period

On the dashboard, it's easy to select a more detailed notional energy trend, as well as a site list showing a ranking of all the sites in your portfolio.



## Energy dashboard for metered energy

By adding smart meters, the energy dashboard allows you to monitor multiple power zones, also beyond lighting. Understand patterns in energy consumption for different groups, like lighting, refrigeration, bakery and HVAC.

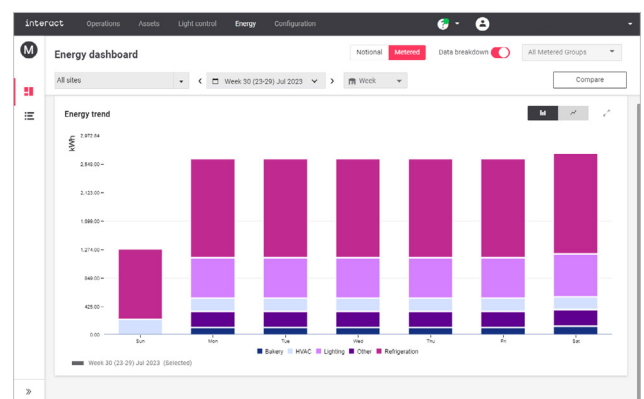
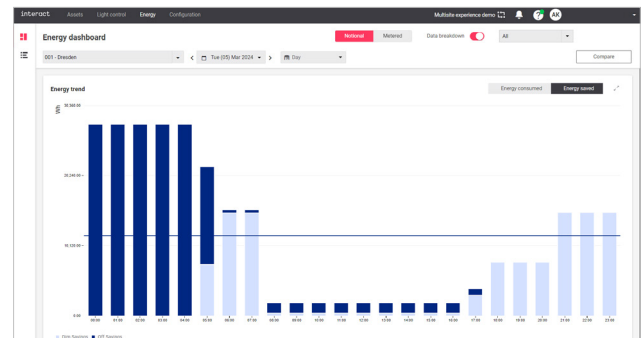
The dashboard provides insights in the energy consumption of all metered groups:

- Total energy consumption
- Data breakdown to show energy consumption per group
- Select a single group to gain more insights of the energy consumption of this group

# Graphical representation of the energy trend

## Energy trend view

- Shows a detailed diagram of historical data of either energy consumption or energy savings.
- Analyze trends of one of your sites or select all sites
- Compare energy trend with a previous period to easily detect anomalies
- Investigate energy breakdown to gain further insights
- Study dim savings to derive insights.
- Drive down energy consumption to save cost and meet sustainability goals



# Compare sites with the site list

Site list

Total energy usage overview

No.	Site name	Consumed energy				Saved energy			
		[kWh] t	[kWh/Light point] t	[kWh/m2] t	[t] t	[kWh] t	[kWh/Light point] t	[kWh/m2] t	[t] t
1	001 - Dresden	384.40	0.84	192.20	58.0	278.00	0.60	139.00	42.0
2	002 - Düsseldorf	380.30	380.30	170.17	92.9	312.07	312.07	156.03	47.1
3	003 - Berlin	468.80	468.80	233.40	70.0	195.40	195.40	97.80	29.5
4	004 - Frankfurt	0.0	0.0	0.0	0.0	0.0	0.0	0.0	0.0
5	005 - Hamburg	0.0	0.0	0.0	0.0	0.0	0.0	0.0	0.0
6	006 - Hannover	0.0	0.0	0.0	0.0	0.0	0.0	0.0	0.0
7	007 - Köln	0.0	0.0	0.0	0.0	0.0	0.0	0.0	0.0
8	008 - Leipzig	0.0	0.0	0.0	0.0	0.0	0.0	0.0	0.0
9	009 - München	0.0	0.0	0.0	0.0	0.0	0.0	0.0	0.0
10	010 - Stuttgart	0.0	0.0	0.0	0.0	0.0	0.0	0.0	0.0

## Site list view

- Shows the ranking of a selected site in comparison with all other sites
- Easy sorting on various energy parameters (absolute or normalized)
- Find outliers, best and worst performing sites, easily and act on it.
- Analyze a specific period of interest

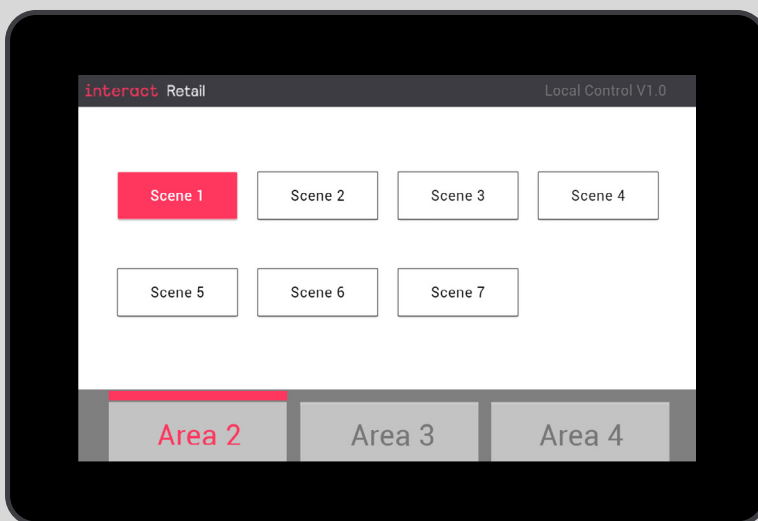


## Local manual override

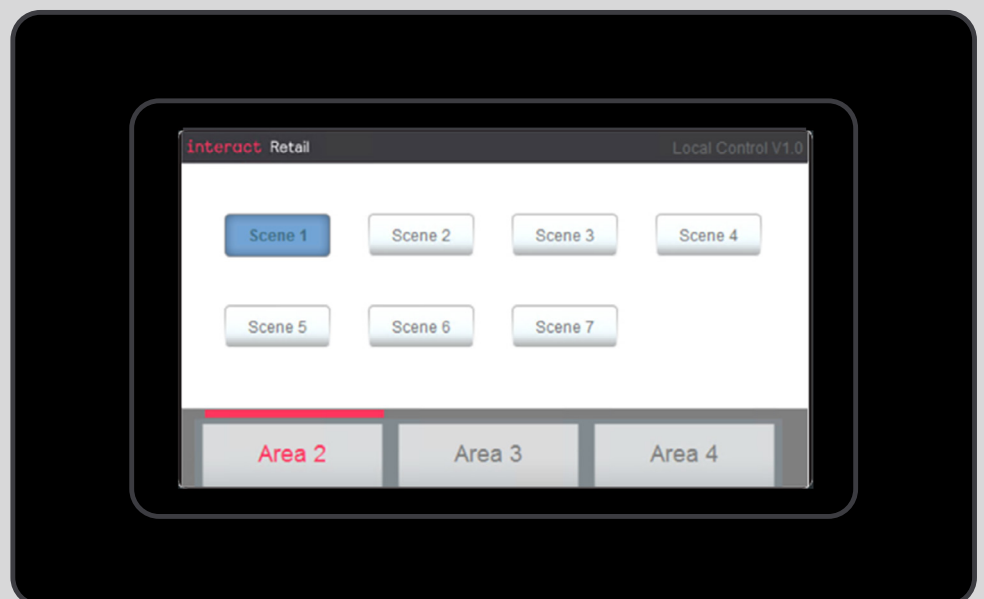
# Let your store staff take control

Touch panel for local manual override provides the store owner flexibility by adjusting lights quickly on the spot:

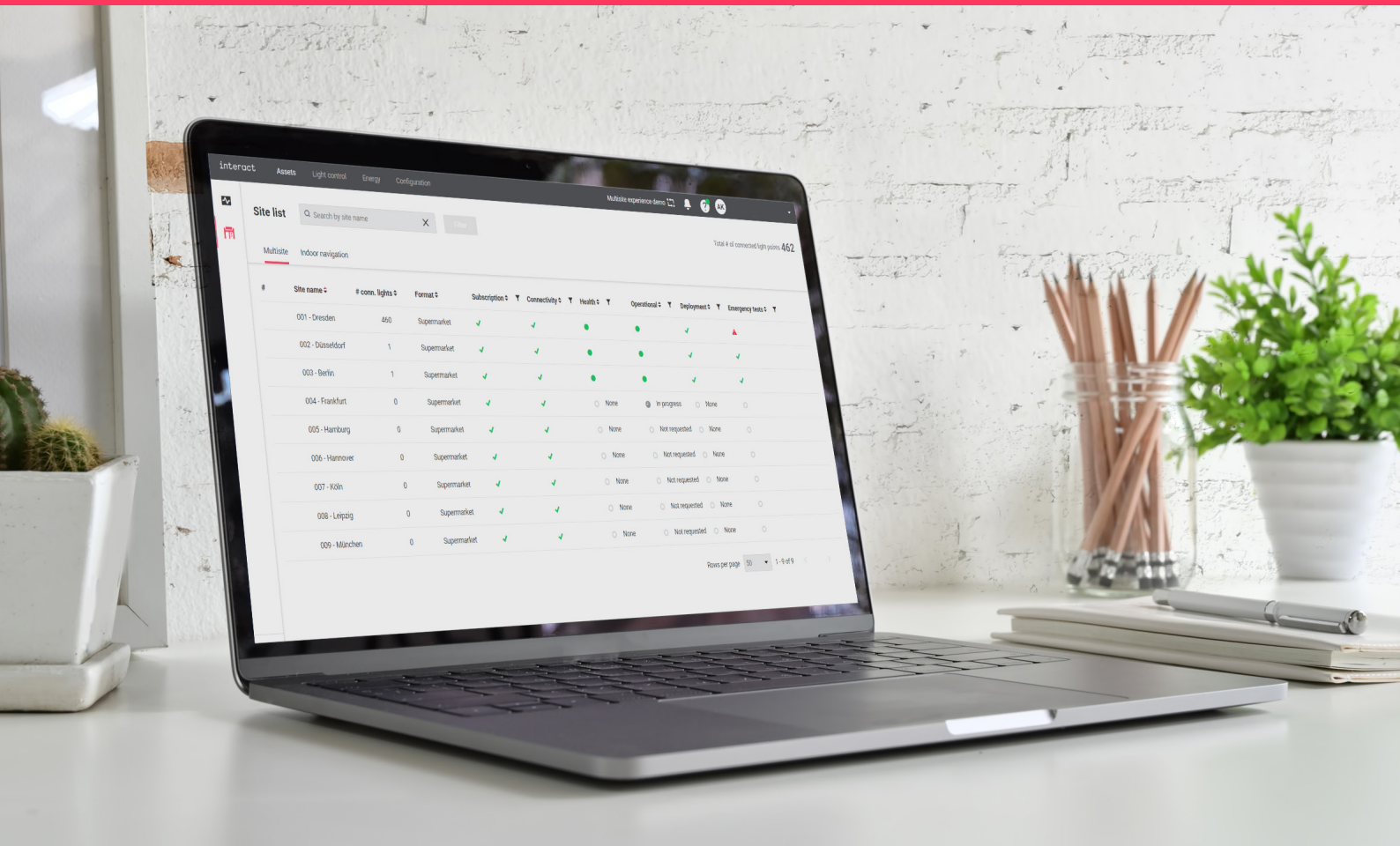
- Allows to select one of the presets per area
- Lighting switches automatically back to the schedule after two hours
- Easily upgrade your existing Store Kit or Store Flex (StoreWise) to Multisite
- Reusing existing lighting controls infrastructure and adding a new site gateway



PDTS touch panel



Upgrading installed DTP100 touch panel



## Quarterly reports unlock the data that all your sites generate

An insightful quarterly report summarizes the performance and system health data of all your connected sites as generated by Multisite system manager.



This report contains rich historical data allowing you to follow trends over the last three months. It also shows the best and least performing sites indicating whenever anything requires your attention and to take corrective action.





# Performance report

Overview of all your sites and active services

Subscriptions expiring soon

## 1. Serviced sites and subscriptions

Sites	January	February	March
Total sites in preparation	1	6	2
Total operational sites	32	32	37
Total sites	33	38	39

### Subscriptions

Subscriptions added	6
<b>Total subscriptions</b>	<b>39</b>

Upcoming expiration date for a site 30/06/2024

For a table with all serviced sites and subscriptions: see Appendix

## 2. Remote system adjustments\*

	Reporting period	Last 12 months
Deployments	16	56
Adjustments to sites	18	69
Saved costs of site visits	€ 3600	€ 13800

Assumption: € 200 per site visit

	Apr '23	May '23	Jun '23	Jul '23	Aug '23	Sep '23	Oct '23	Nov '23	Dec '23	Jan '24	Feb '24	Mar '24	Total
Deployments	12	7	5	0	1	3	5	3	4	3	3	10	56
Adjustments to sites	12	10	6	0	2	3	10	3	5	3	5	10	69

\* Excludes initial configuration and customer deployments

Number of saved site visits by remote (batch) updates of scenes and schedules

Notional energy consumption

## 3. Notional energy consumption and energy savings

	January	February	March
Sites for energy reporting	32	32	37
Energy consumption*			
Total of all sites	48.72 MWh	45.40 MWh	49.10 MWh
Average per site	1.52 MWh	1.42 MWh	1.33 MWh
Dim savings			
Total of all sites	19.76 MWh	18.33 MWh	20.03 MWh
Average per site	0.62 MWh	0.57 MWh	0.54 MWh
Percentage	28.9 %	28.8 %	29.0 %
Switch off savings			
Total of all sites	98.05 MWh	92.27 MWh	105.92 MWh
Average per site	3.06 MWh	2.88 MWh	2.86 MWh

\* Notional energy consumption based on installed power and light level

Energy savings by scheduling and dimming versus installed power

Energy savings achieved by dimming your light

Carbon footprint reduction achieved by adjusting the lighting properly

## 4. Carbon footprint and CO<sub>2</sub> reduction

Energy saving	Total energy savings	Dimmed energy savings*
Smart lighting will save	354.35 MWh	58.09 MWh
Emissions reduction		
Carbon footprint reduction	160.17 tons CO <sub>2</sub>	26.26 tons CO <sub>2</sub>
Equivalent environmental benefit		
Avoided annual emissions of	4004 trees planted	657 trees planted

\*Energy savings accumulated for the reporting period

### Conversion parameters used

CO<sub>2</sub> emission factor (gCO<sub>2</sub>/kWh), value 452, source IEA 2015  
CO<sub>2</sub> equivalent trees (tCO<sub>2</sub>/tree/year), value 6

## 6. Compliance

### 6.1 Sales floor

Compliance check between central deployments and local manual overrides

Compliance	January	February	March
Sites fully compliant	17 sites	19 sites	10 sites
Sites with non-compliant operation	15 sites	13 sites	27 sites
Total hours of compliant operation	56223 hours	52811 hours	60635 hours
Total hours of non-compliant operation	1065 hours	781 hours	1021 hours
Percentage of non-compliant operation	1.9 %	1.5 %	1.7 %

Usage of local manual override versus centrally deployed scenes

Historical cloud availability

## 7. Cloud availability

	January	February	March
Planned downtime	000:51 h	000:22 h	000:22 h
Unplanned downtime	000:00 h	000:01 h	000:00 h
<b>Percentage of cloud availability</b>	<b>100.0 %</b>	<b>100.0 %</b>	<b>100.0 %</b>





## Service that help to keep your site up-to-date

Powerful remote lighting control includes remote monitoring services. You are entitled to helpdesk & service ticketing. Regular software security and feature updates via cloud ensures that your system is always up to date.



### Optional services

1. **4G connectivity service:** Taking away the hassle of integrating with your IT by including a 4G router into the installation.
2. **Remote operations:** Peace of mind – we manage and monitor your lights remotely upon your needs.



# Optional remote operations

## 4G connectivity service

In case fixed line connectivity is not possible, we can offer powerful wireless connectivity from the day of commissioning.

- Hassel free installation and commissioning
- Includes a secure 4G IoT router with embedded SIM delivered in partnership with Vodafone
- Managed data bundle
- Broad EU/US coverage: 30+ countries

---

## Remote emergency lighting testing service

Store safety is key, and regular health checks of emergency lighting is mandatory. Save precious time by triggering emergency light tests remotely via our experts.

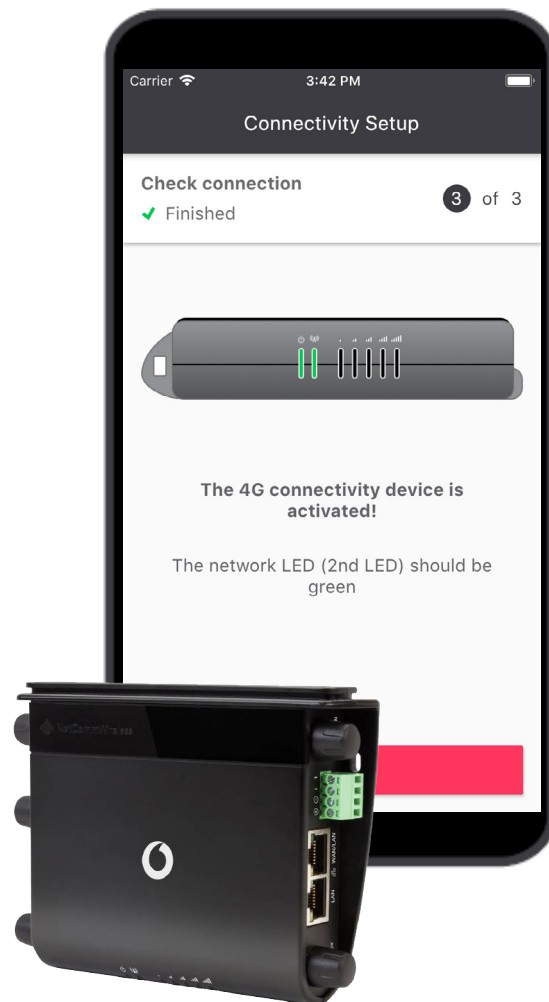
- Trigger functional and duration tests remotely
- Query emergency test results remotely
- Get report with historical test results to plan replacement efficiently if needed
- Get confirmation that your emergency lighting operates correctly on battery

---

## Remote post install site tuning service

Remote expert support to facilitate post install fine tuning and adjustment of your configuration.

- Supports fast and more reliable project execution
- Robust commissioning process to safeguard delivery on time
- No need for additional onsite visits after project handover





## Enhance operational efficiency by integrations

Multisite System Manager seamlessly integrates with various types of building management systems including alarm systems using different local or cloud interfaces.

Thereby it makes your operational ecosystem smarter. Your facility management and maintenance team gets their job done more efficient and cost effective.

Gain insight into the status of the lighting throughout your sites, down to the individual luminaire, and improve maintenance planning and execution.





## Integration with other systems in the building

Hassle free operations with local integration

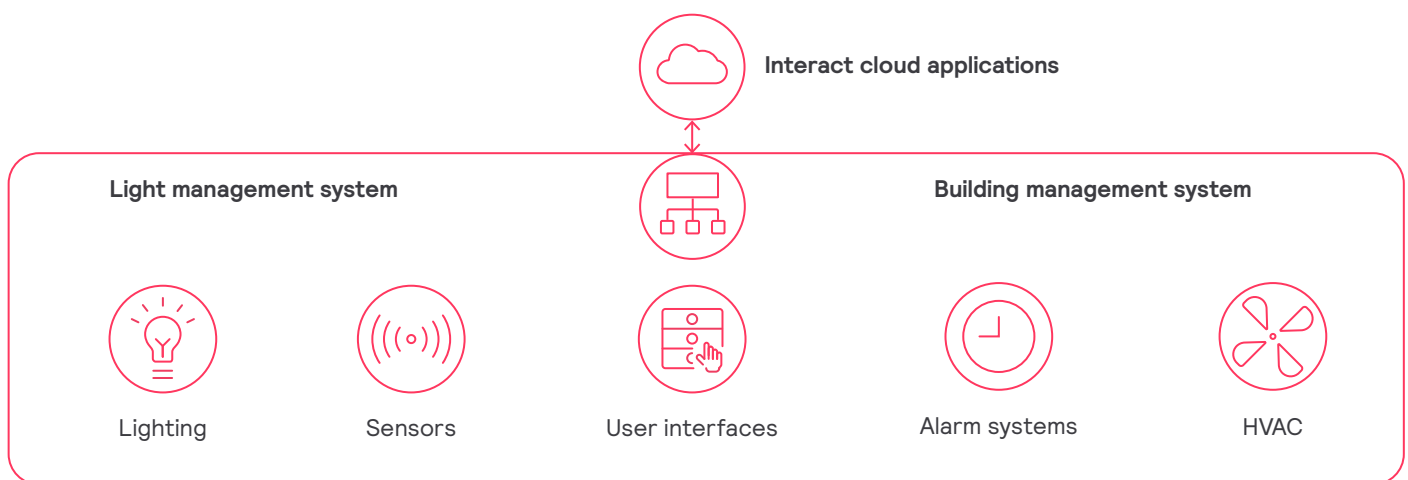
- With alarm, refrigeration and BMS systems
- Leverage BMS routines to trigger scenes

Support of common interfaces

- Dry contact
- BACnet
- CGI

Large variety of local manual override options

- Using touch screens, touch panels or
- Daylight- and presence sensors



Coming soon

## Multisite cloud API integrations



### Energy API:

- Makes historical consumed energy data per store available
- Notional and metered energy data



### Light Control API and Calendar API:

- Allows contextual lighting control such as store opening hours
- Triggers & scheduling from building routine e.g., BMS or Alarm system



### Data API:

- Make lighting asset data such as failures available
- Comprises health status and light points failures





## End-to-end encryption & granular permissions keep your system secure

Best-in-class security is provided for all your connected systems, services and data. Interact supports security on every interface, while data, both in transit and at rest, are end-to-end encrypted.



TLS  
Encrypted  
Network

The Multisite system is based on a modular on-premises Philips Dynalite controls architecture with a secure connection to the Interact cloud platform, managed by Signify, built on top of it.



LDAPS  
Encrypted  
Authentication

The site gateway provides a secure cloud connection and manages all lighting at your site. The site gateway (PDDEG-S) connects securely over the internet to the cloud, and via RS-485 or Ethernet to the controllers on site.



SSL secured  
Dashboard  
and API's

Our cloud dashboard and API interfaces are SSL encrypted with token-based authentication.



ISO 27001  
certified  
system



## Role-based permissions

Access rights and privileges are managed by simple role-based permissions (least privileges) for the following user roles:

Activities / Roles	Facility manager	Format manager	Site manager/Staff
User management (e.g. workorders, etc)	✓		
Assets and health	✓	✓	
Light control (Concepts and Schedules)	✓	✓	( ✓ )
Configuration (Design)	✓		
Energy monitoring	✓	✓	

Explanation of the symbols



Possible



( ✓ ) Local temporary override only

## Azure active directory identity management

Simplify account and password management by allowing users to securely log in to the Interact dashboard using their existing company email address and password.

Federating with your existing Azure active directory tenant to invite authorized users and assign corresponding roles. State of the art security measures ensure that your system is protected, and your data is secure.

Our policies are in accordance with ISO 27001 and IEC 62443-4-1, a security certification for product development processes which ensures that all identified security requirements are implemented, verified, tested, and documented with traceability.



Azure Active Directory



## Further reading

Learn more about how Interact enhances shopper experience, energy savings, etc.

Understand in more detail how real-time occupancy saves energy, and what your savings will be in our report by Cundall.



## White paper

## Product brochures



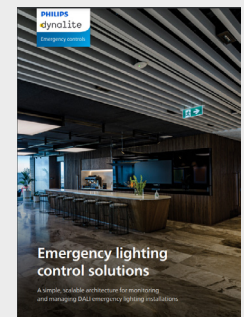
Guidehouse insights



User Interfaces & Electrical Accessories



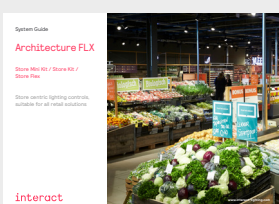
Sensor Technologies & Product Range



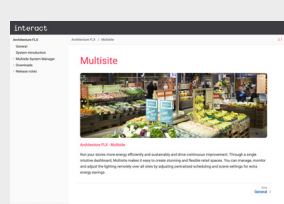
Emergency lighting control solutions

## System documents

## System information



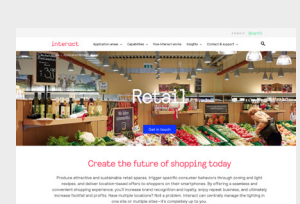
Architecture FLX System Guide



Architecture FLX User Guide



Bill of materials



Retail applications

# interact



Find out how Interact can transform your business

[www.interact-lighting.com](http://www.interact-lighting.com)

© 2024 Signify Holding. All rights reserved. Specifications are subject to change without notice. No representation or warranty as to the accuracy or completeness of the information included herein is given and any liability for any action in reliance thereon is disclaimed. All trademarks are owned by Signify Holding or their respective owners.